

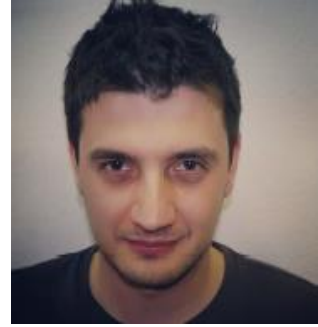
Mr. Mislav Stepinac (Croatia)

University of Zagreb

Zagreb Croatia

[mstepinac\(at\)gmail.com](mailto:mstepinac(at)gmail.com)

COST FP1402, MC Substitute Member, WG3 member



Personal

Years of experience in relevant field: 6
Expertise: joints in timber structures, glued in rods, glass-timber composites, timber frames with glass infill
Degree: MSc. (12.06.2008)

Organisation

Faculty of Civil Engineering, Structural department (www.grad.hr)
Focus: practical research / innovation, design of structures and education / training
Facilities: Testing lab, NDT instruments for timber, quadcopter

No. of staff	PhD students	MSc/year
3	2	55

Research projects

SMOOHS - European Commission (EU), Seventh Framework Programme - ENVIRONMENT, Project Reference: 212939, duration 4 years, people involved: Vlatka Rajčić, Mislav Stepinac, www.smoohs.eu/tiki-index.php

“ Seismic resistance of composite structural systems timber-structural glass with optimal energy dissipation“ - bilateral project with IZiIS intitute from Skopje, Macedonia, duration 1 year, people involved: Vlatka Rajčić, Mislav Stepinac

Publications

1. Antolinc, David; Rajčić, Vlatka; Žarnić, Roko.
Analysis of hysteretic response of glass infilled wooden frames. // Journal of Civil Engineering and Management. 20 (2014)
2. Pavković, Krunoslav; Rajčić, Vlatka; Haiman, Miljenko.
Large diameter fastener in locally reinforced and non-reinforced timber loaded perpendicular to grain. // Engineering structures. 74 (2014) ; 256-265
3. Čizmar, Dean; Kirkegaard, Poul Henning; Sorensen, John Dalsgaard; Rajčić, Vlatka.
Reliability-based robustness analysis for a Croatian sports hall. // Engineering structures. 33 (2011) , 11; 3118-3124
4. Kirkegaard, Poul Henning; Sørensen, John Dalsgaard; Čizmar, Dean; Rajčić, Vlatka.
System reliability of timber structures with ductile behaviour. // Engineering structures. 33 (2011) , 11; 3093-3098
5. Stepinac, Mislav; Hunger, Frank; Tomasi, Roberto; Serrano, Erik; Rajčić, Vlatka; van de Kuilen, Jan-Willem,
Comparison of design rules for glued-in rods and design rule proposal for implementation in European standards // CIB-W18, 2013.

