

C O M M O N A R C H I T E C T U R E

TU Munich
TEd'A arquitectes | Irene Pérez and Jaume Mayol
Autumn 2019

Cover: Luca Galofaro. An atlas of imagination. 2015
Original: Paolo Monti. Procida, Napoli, 1968

COMMON ARCHITECTURE

This course is about the common, the local, the quotidian, the popular, the normal, the ordinary, the infraordinary things.

This course is about traditional architectures. Architectures without architects. Common architectures having simplicity as a common feature.

This course is about using the existing as a tool. Learning from past and tradition. Tradition passes on secular knowledge from generation to generation. Preferring evolution rather than revolution.

This course is about contributing to regional identity. The identity of a place is created by the repetition of the same concept, the same process, the same solution. That's how craftsmen work. With every repetition their work becomes better and better.

This course is about valuing the specific and tiny place where we work. It's about understanding the local peculiarities of that small part of the world. It's about continuing with the logic of the environment where the work takes place. Intentionally rooted in that precise place.

WHAT?

As a main common architecture we are going to work with a HOUSE.

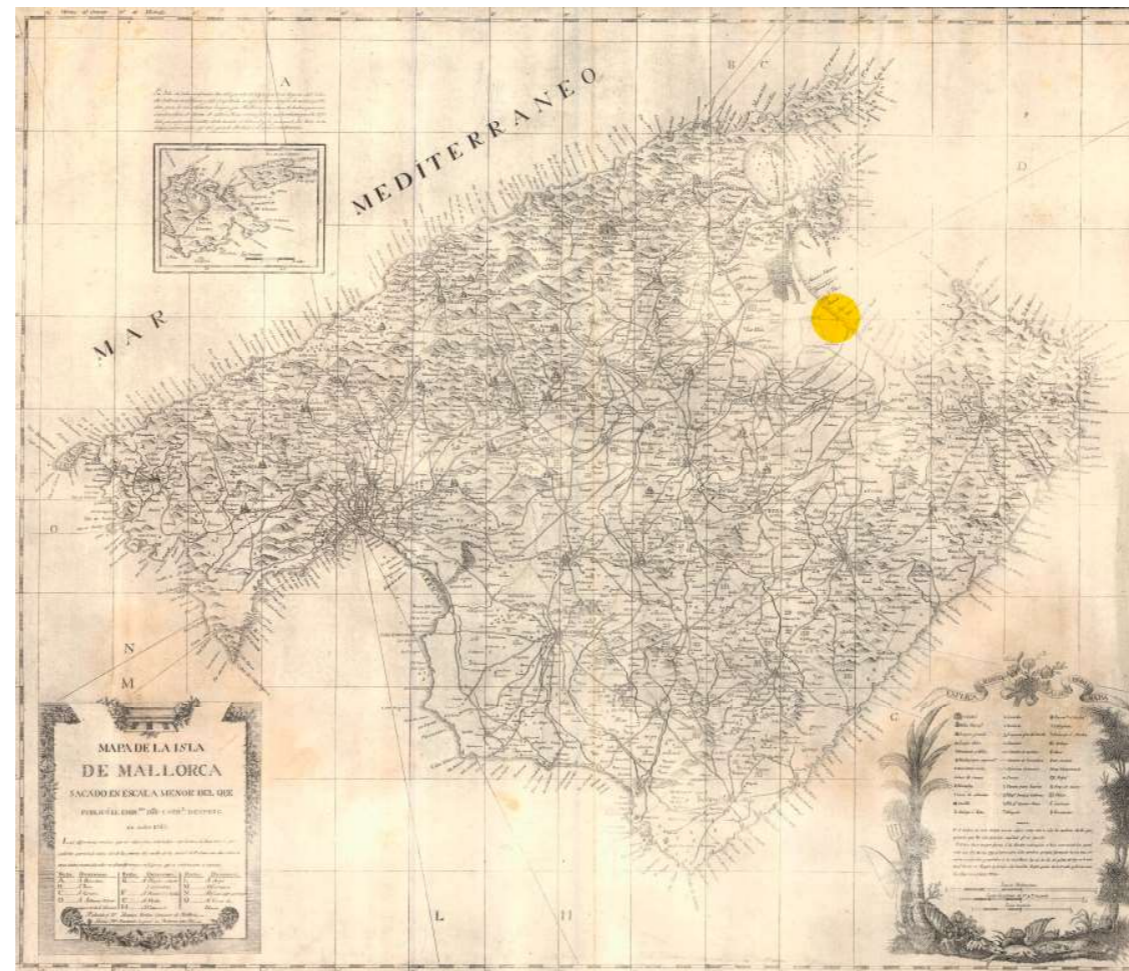
WHERE?

A house located in MALLORCA, the biggest of the Balearic Islands.

We will focus in three different vilages. Can Picafort, on the north of the Island, Montuïri, in the center, and Portocolom in the south.

Three different locations in order to understand the whole territory of Mallorca. In each vilage, each student will have his own plot, an specific plot for each student.

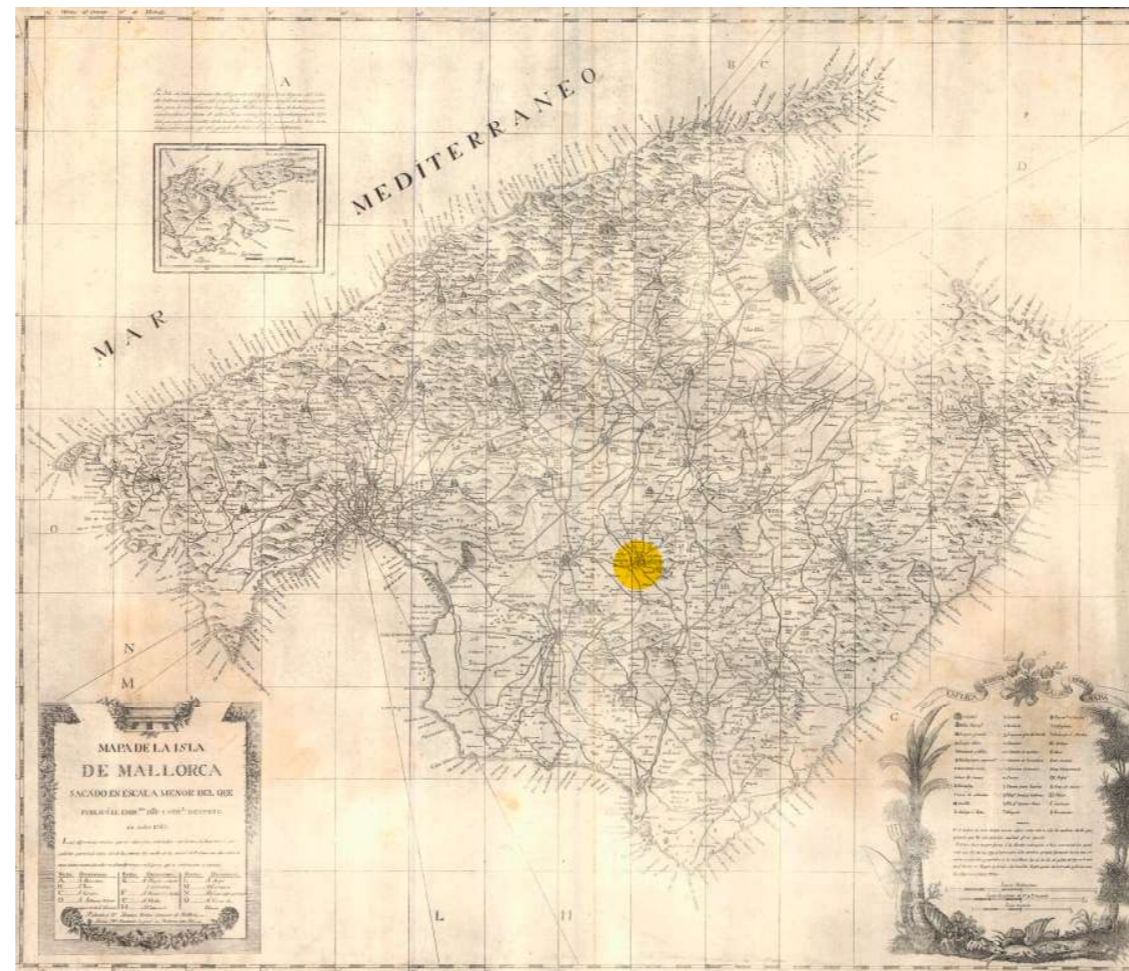
Designing in a built landscape.
Designing while learning from the existing.
Disigning a built landscape.



Can Picafort on the map of Mallorca



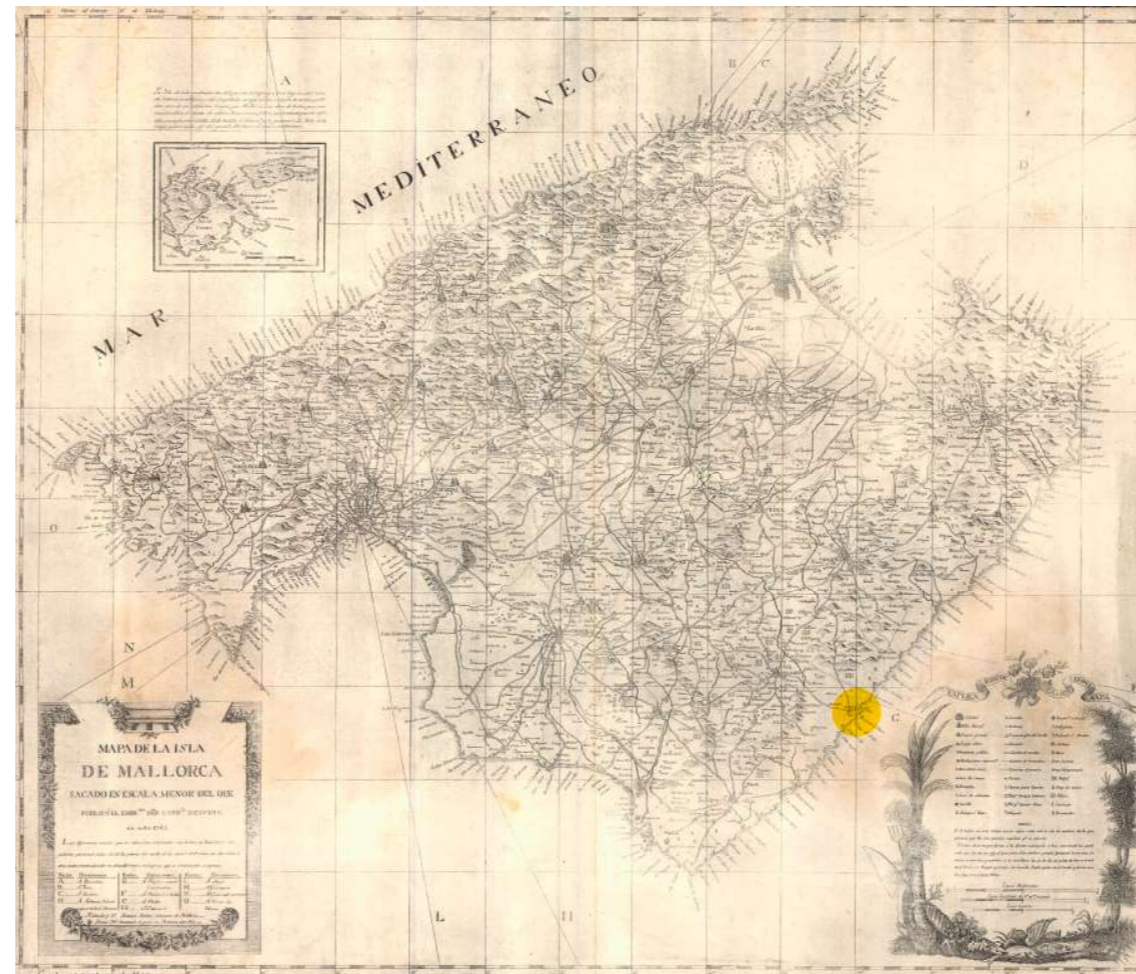
Can Picafort



Montuiri on the map of Mallorca



Montuiri



Portocolom on the map of Mallorca



Portocolom

HOW?

To design with strong coherence following the project's rules, not the architect's desires. Each line needs its precedent to be held up. Each line of the drawing will weigh on the work.

To design with strong coherence through five different scales of the project:

A common LANDSCAPE
... as aggregation of houses

A common HOUSE
... as aggregation of rooms

A common ROOM
... as aggregation of corners

A common CORNER
... as aggregation of elements

A common ELEMENT
... built with common materials

Knowing that, perhaps, coherence is just our individual utopia.

A common LANDSCAPE
... as aggregation of houses



J. A. Coderch. Collage for his article "No son genios lo que necesitamos ahora". *Domus*. 1961



J. Barba Corsini. Binibeca Vell. Menorca. 1964



Les Moulins de Meaux. France

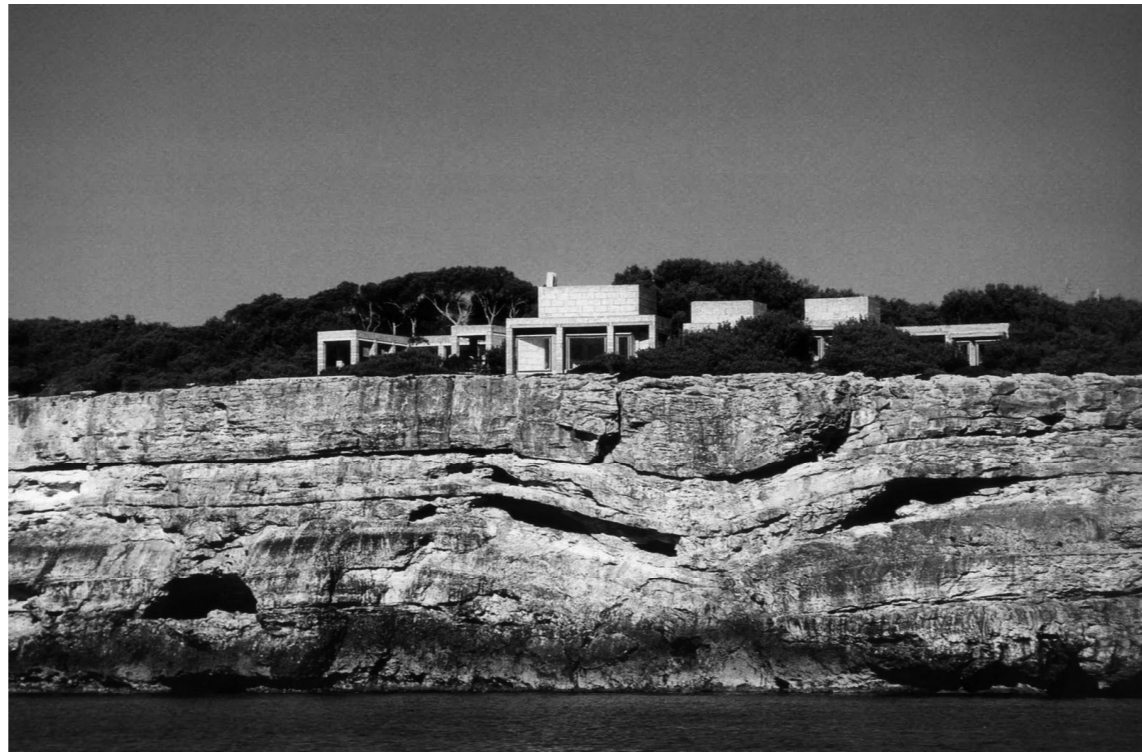
A common HOUSE
... as aggregation of rooms



Robert Doisneau. La Maison des Locataires. 1962

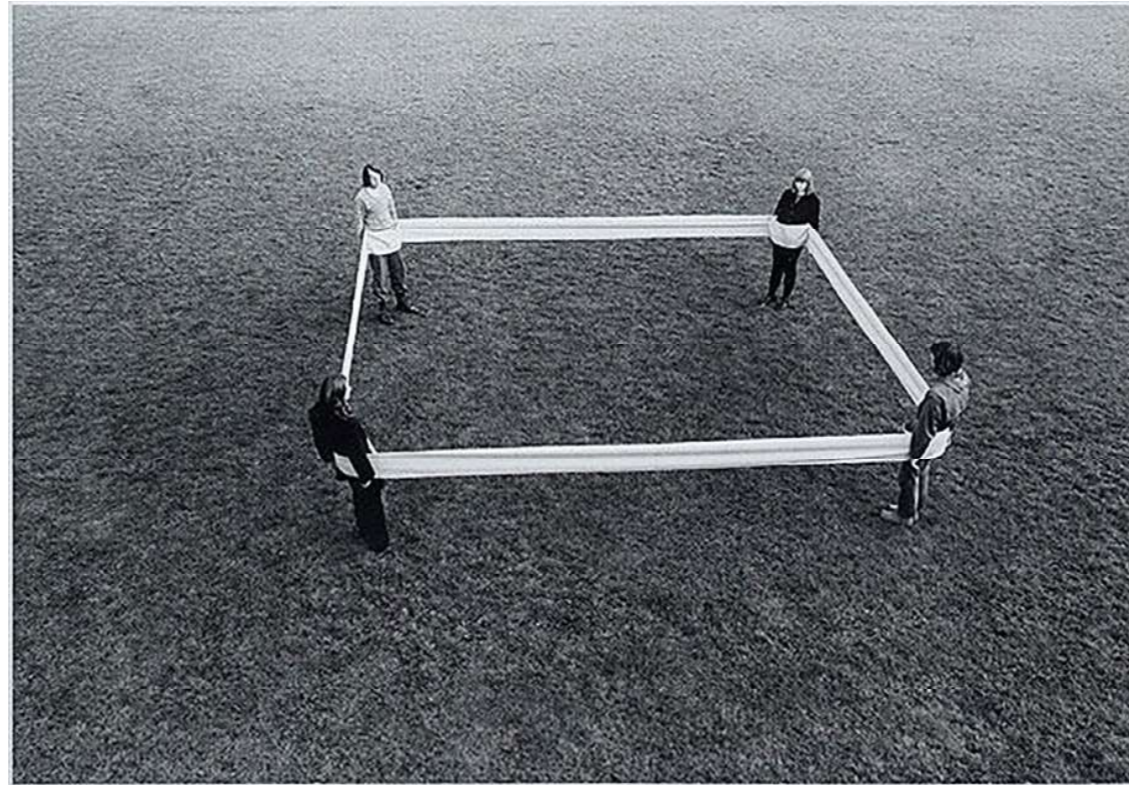


Henry Quillé. Casa Erró. Formentera. 1968-1971

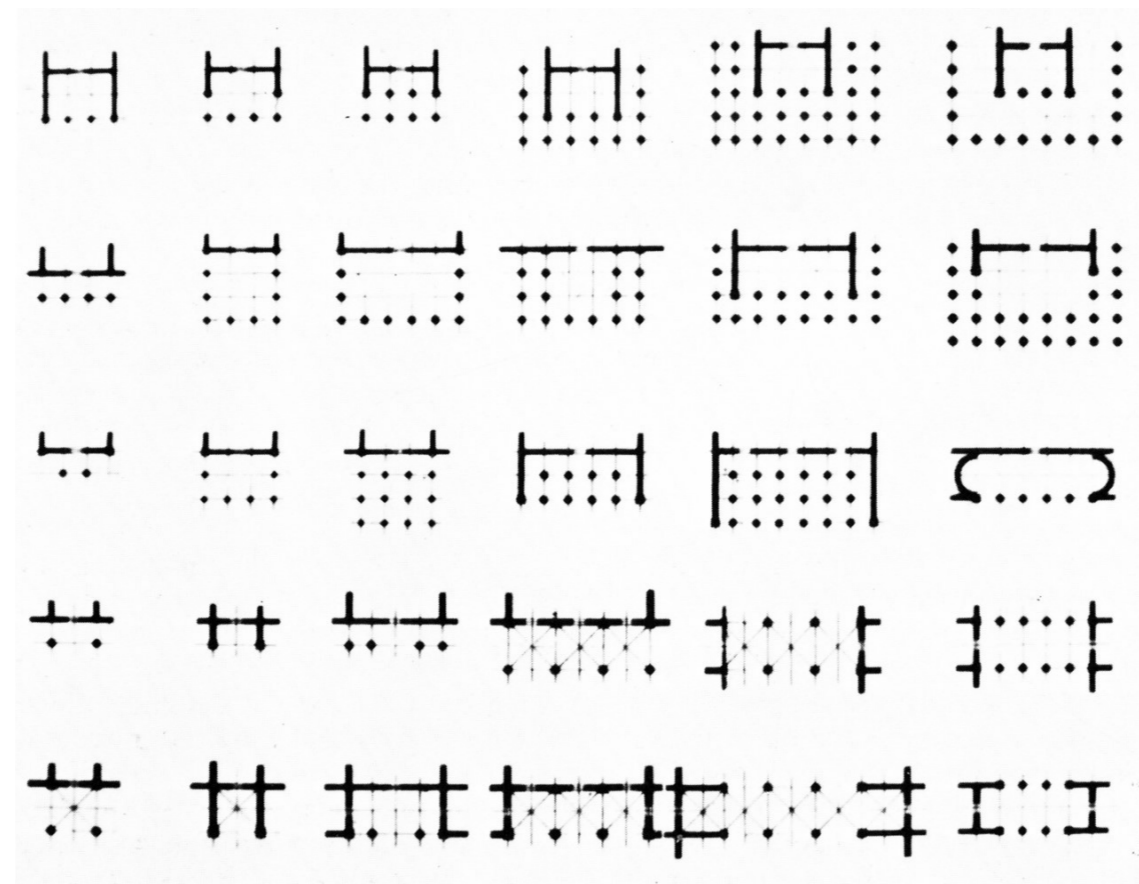


Jorn Utzon. Can Lis. Portopetro, Mallorca. 1972

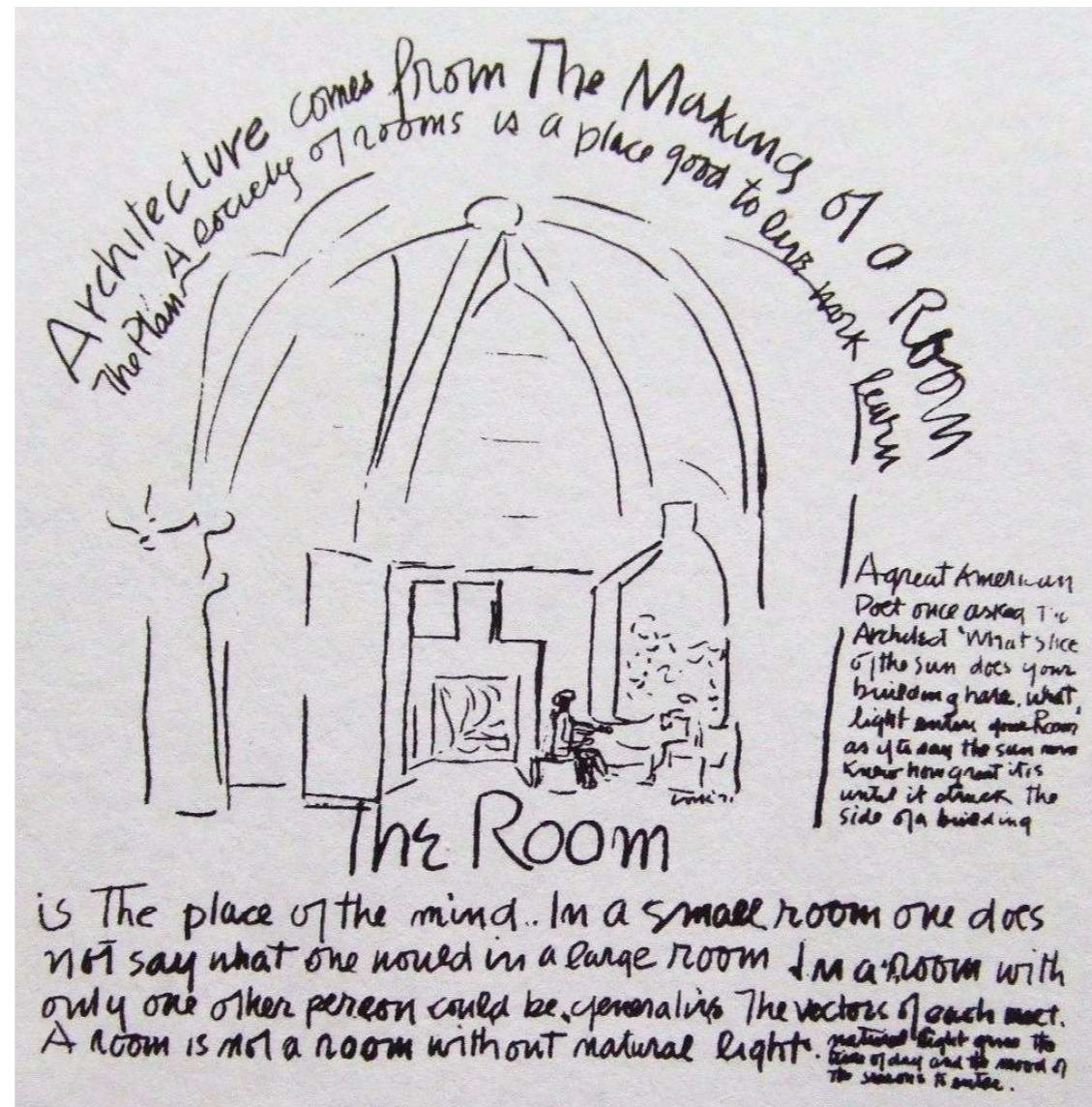
A common (interior) ROOM
... as aggregation of corners



Franz Erhard Walther. *Vier Körpergewichte*. 1968

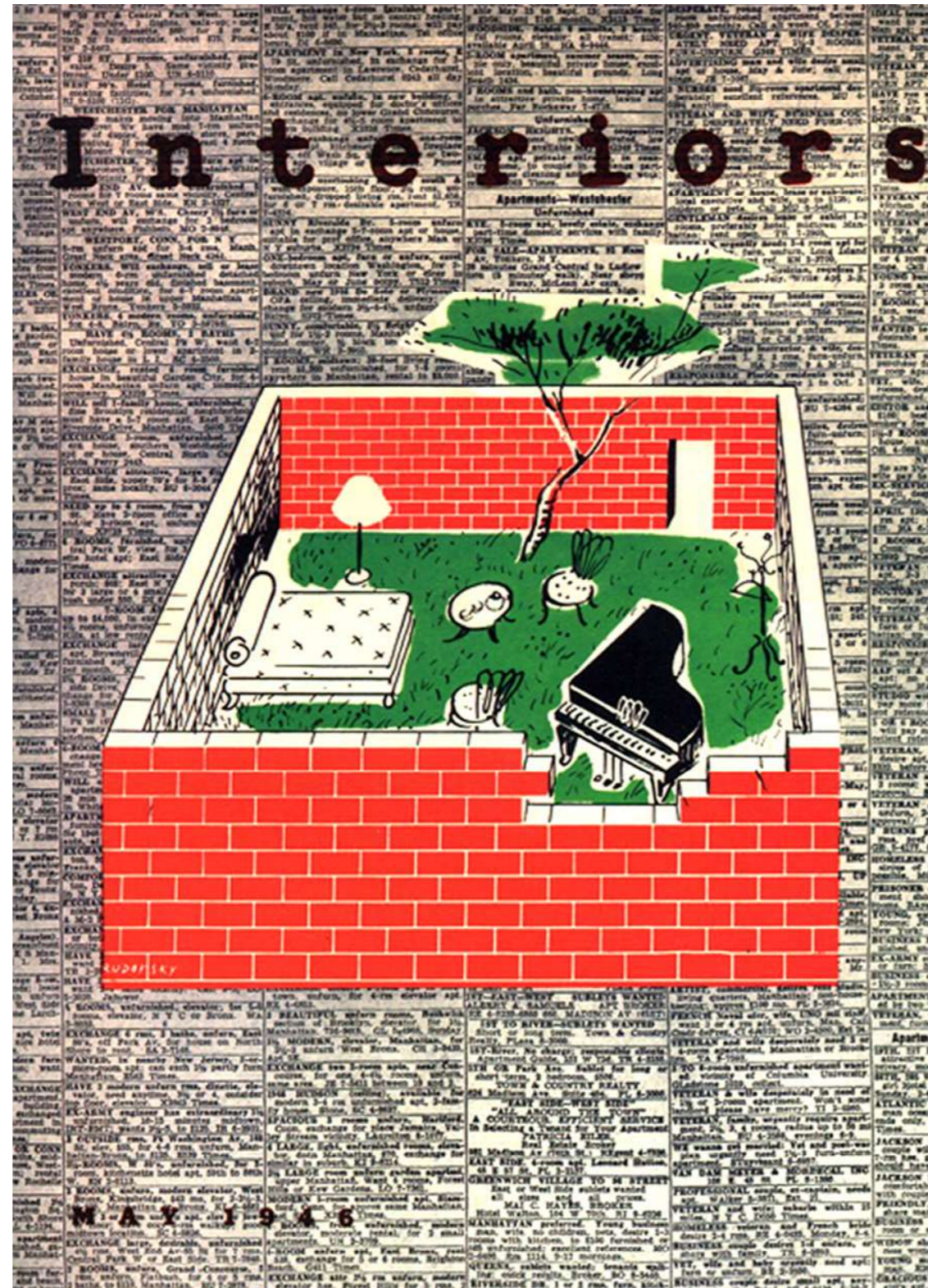


Jean Nicolas Louis Durand. *Porches*. 1802



Louis Khan. *The Room*. 1971

A common (in-between) ROOM
... as aggregation of corners

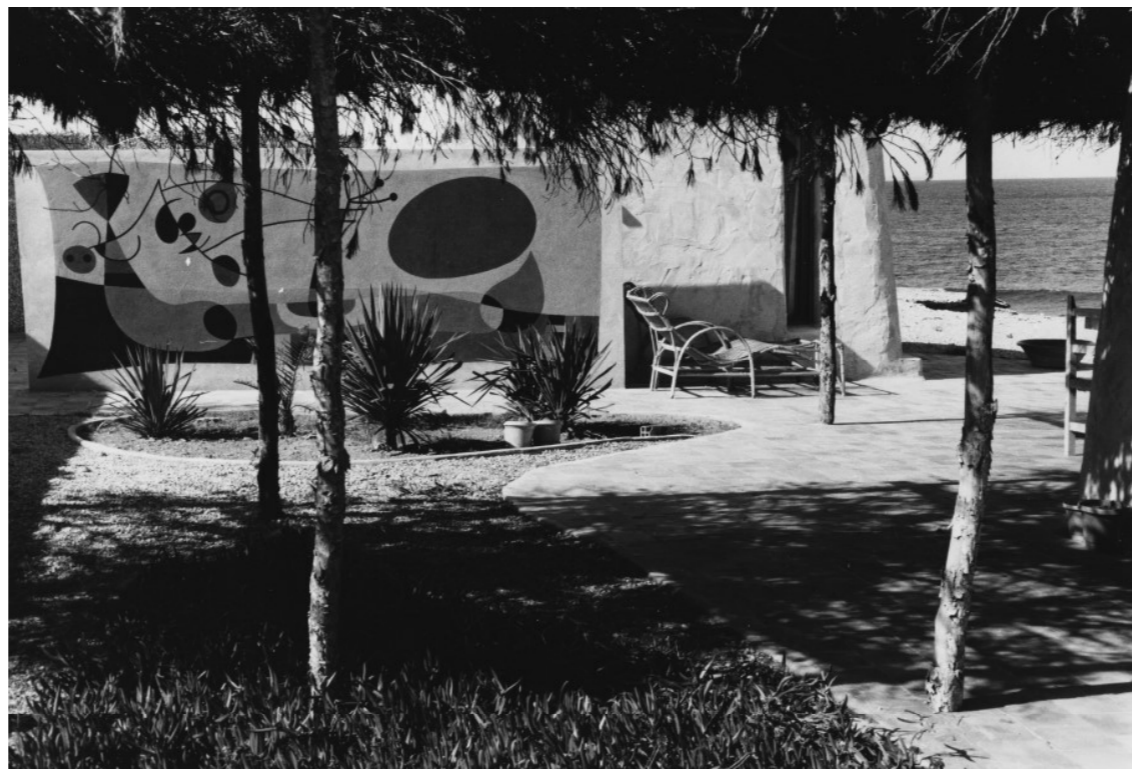


Bertrand Rudofsky. Interiors cover. 1946



112 Palma de Mallorca.
Patio casa Sureda.

Can Vivot. Palma, Mallorca. Refurbished 17-18th century



Henry Quillé. Casa Erró. Formentera. 1968-1971

A common CORNER
... as aggregation of elements



Jorn Utzon. Can Lis. Portopetro, Mallorca. 1972



Alberto Ponis. *La casa vecchia*. Palau, Sardegna.



Traditional house. Kitchen. Artà, Mallorca

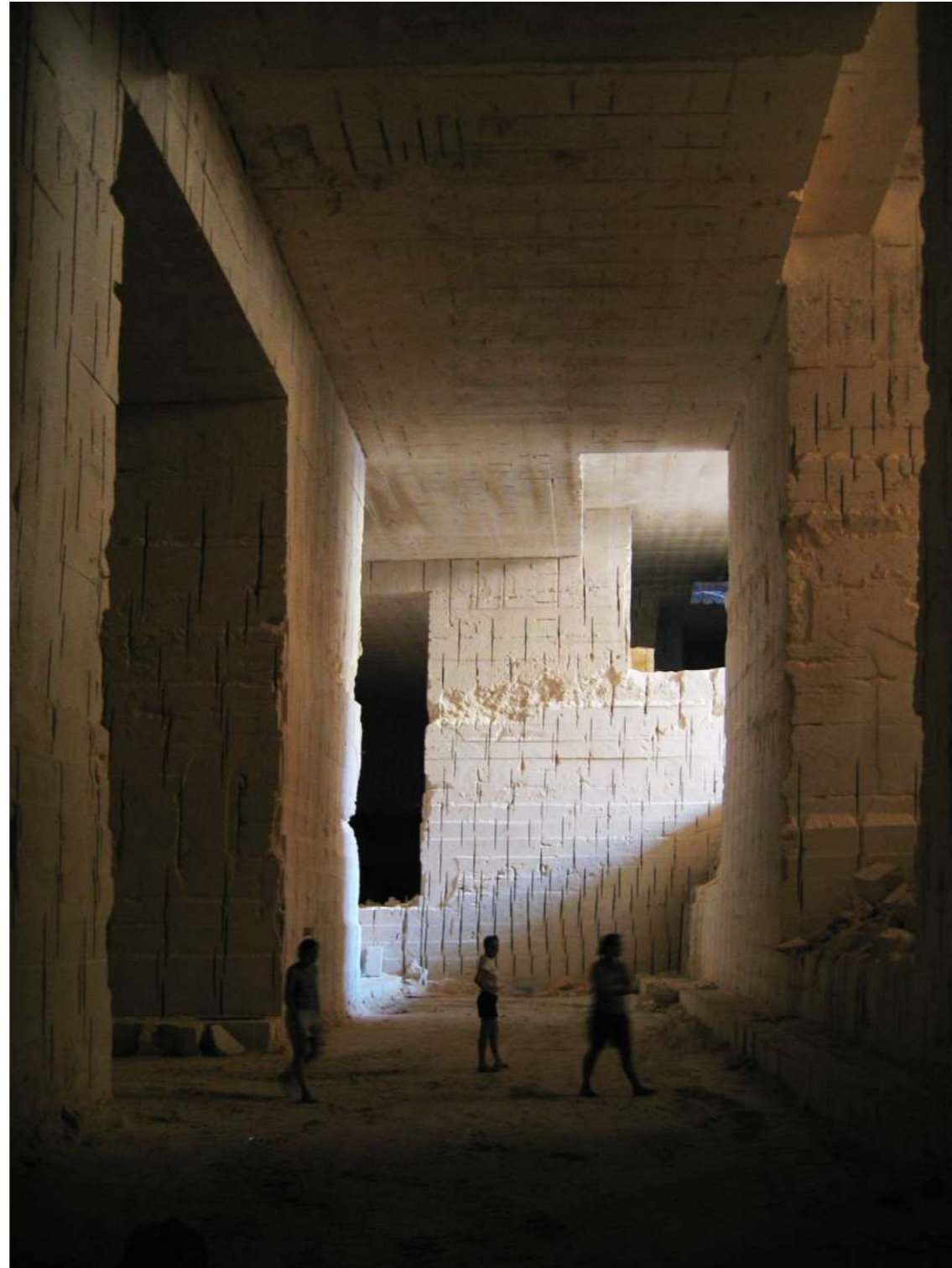


Jacobus Vrel. *An Interior of a House with a Seated Woman.*
1654



Hendrik van Steenwyck II. *Saint Jerome in his Study*. 1630

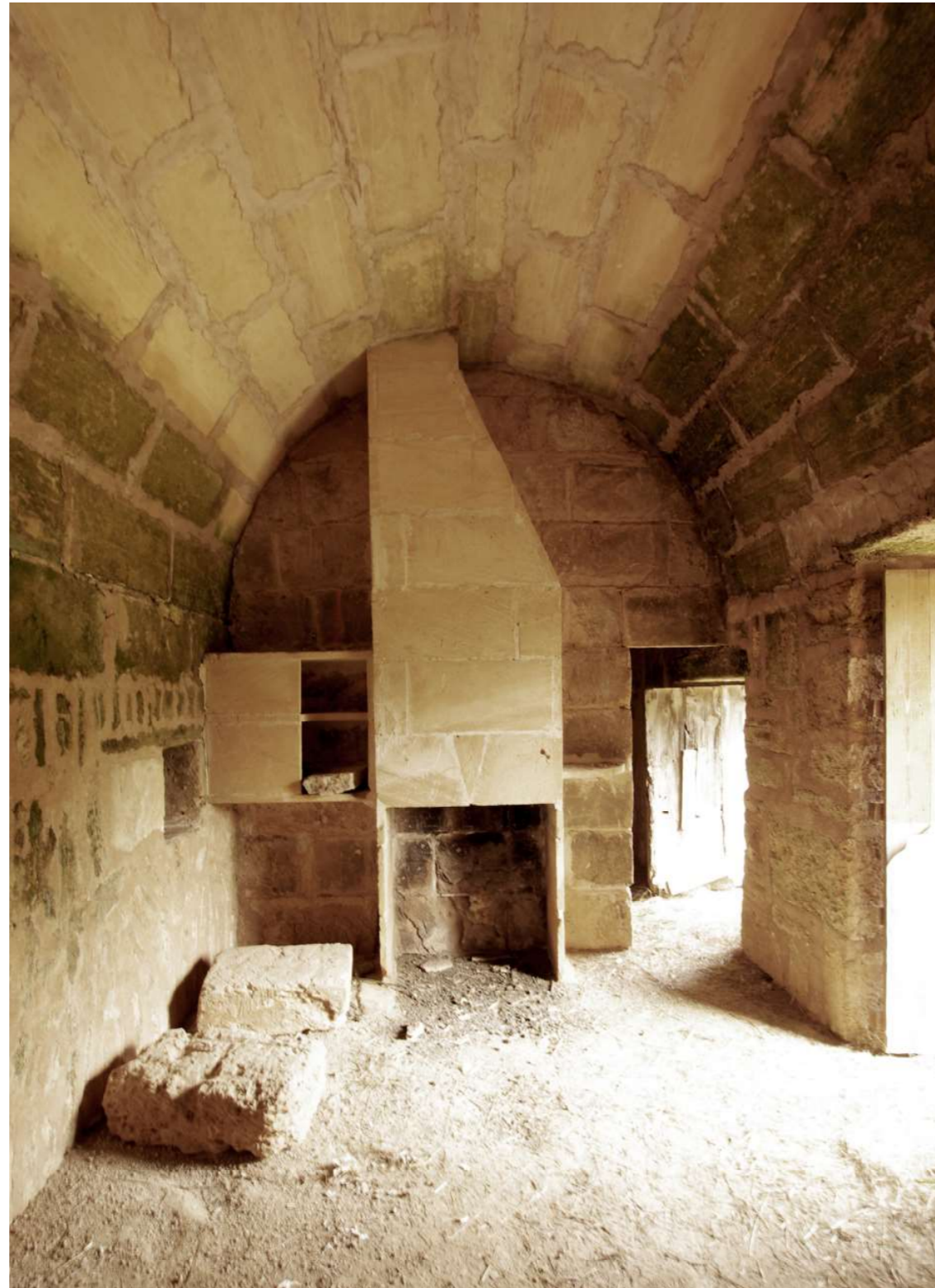
A common ELEMENT
... built with a common material



Galdent. *Marés* quarry. Lluçmajor



Jorn Utzon. Can Lis. Portopetro, Mallorca. 1972



Traditional architecture. Mallorca

SIX DRAWINGS AND SIX MODELS

1. LANDSCAPE 1/250

To draw and to model the house as part of the built landscape

2. HOUSE 1/50

To draw and to model the house as evolution of the traditional typologies that give identity to the specific site

3. ROOM (int) 1/20

To draw and to model an interior room as scenario of the life that it contains

4. ROOM (in-between) 1/20

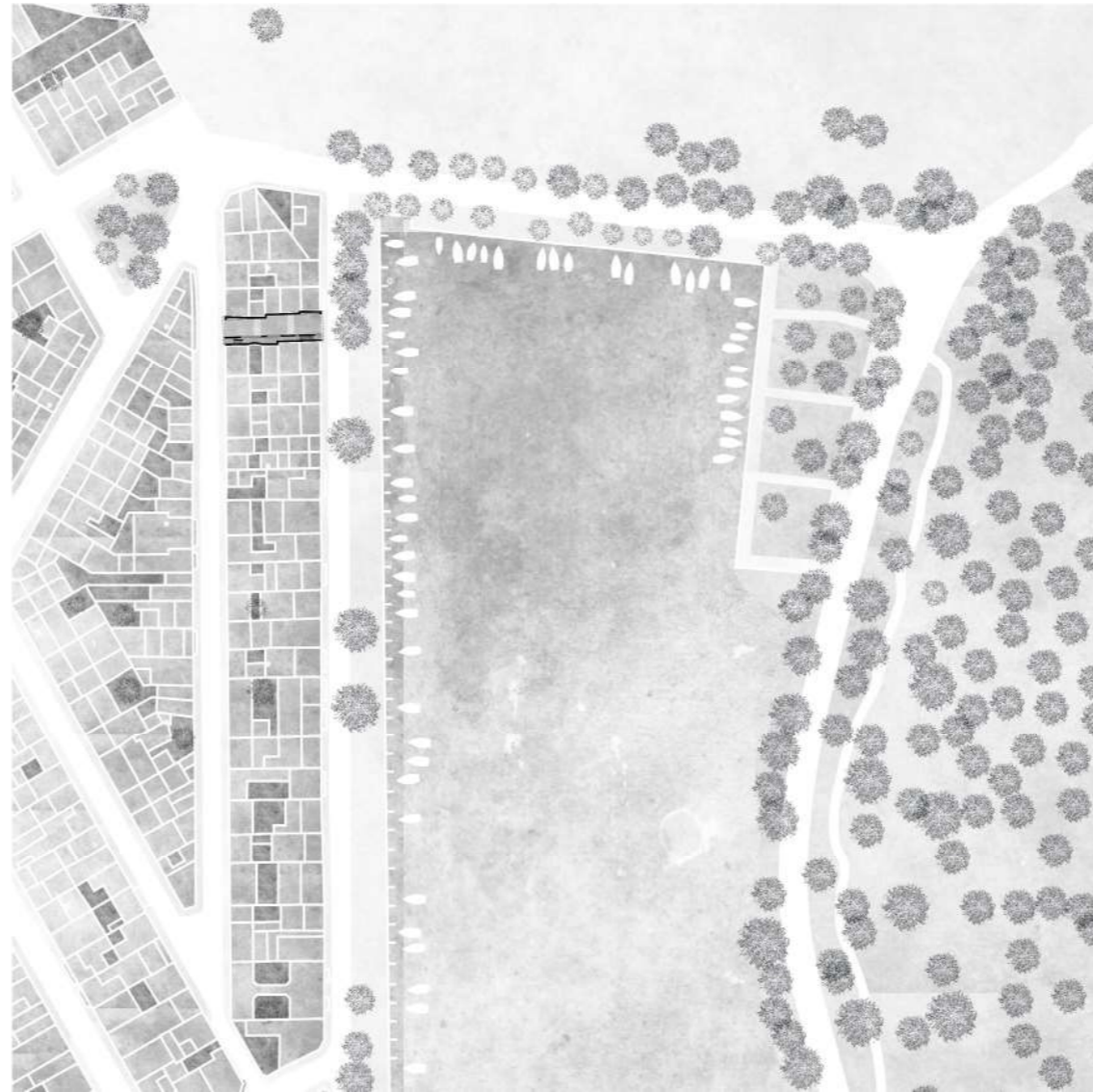
To draw and to model an exterior room as scenario of the life that it contains

5. CORNER 1/10

To draw and to model a corner of a room as a humanized and comfortable space

6. ELEMENT 1/5

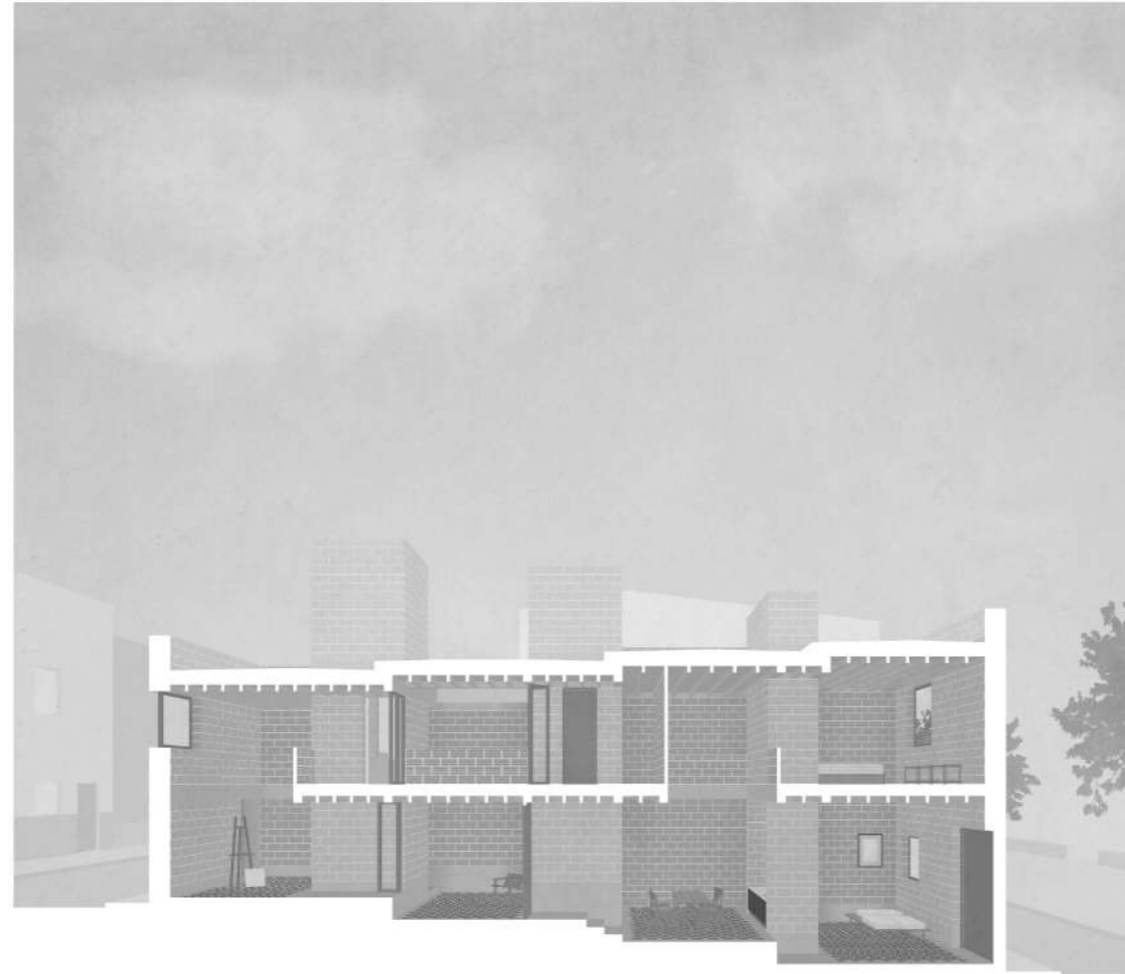
To draw and to model one of the building elements as a key for the project



Oskar Kaag. UNI Stuttgart student. Spring 2019
LANDSCAPE. Drawing



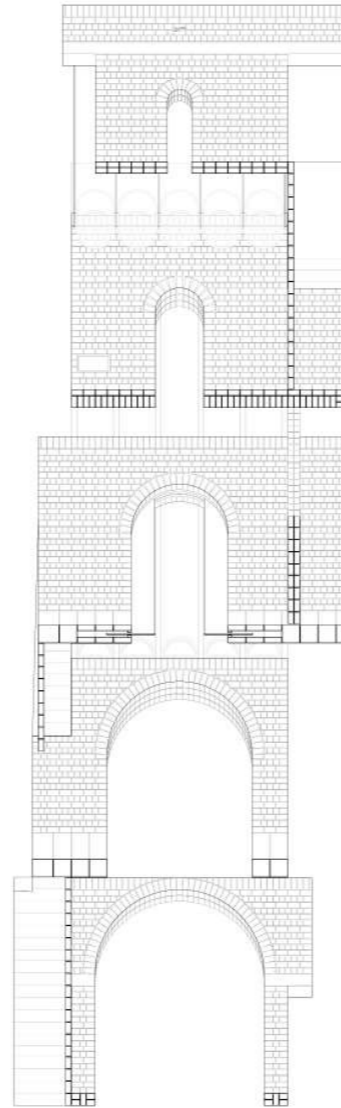
Oskar Kaag. UNI Stuttgart student. Spring 2019
LANDSCAPE. Model



Patrick Seehuber. UNI Stuttgart student. Spring 2019
HOUSE. Drawing



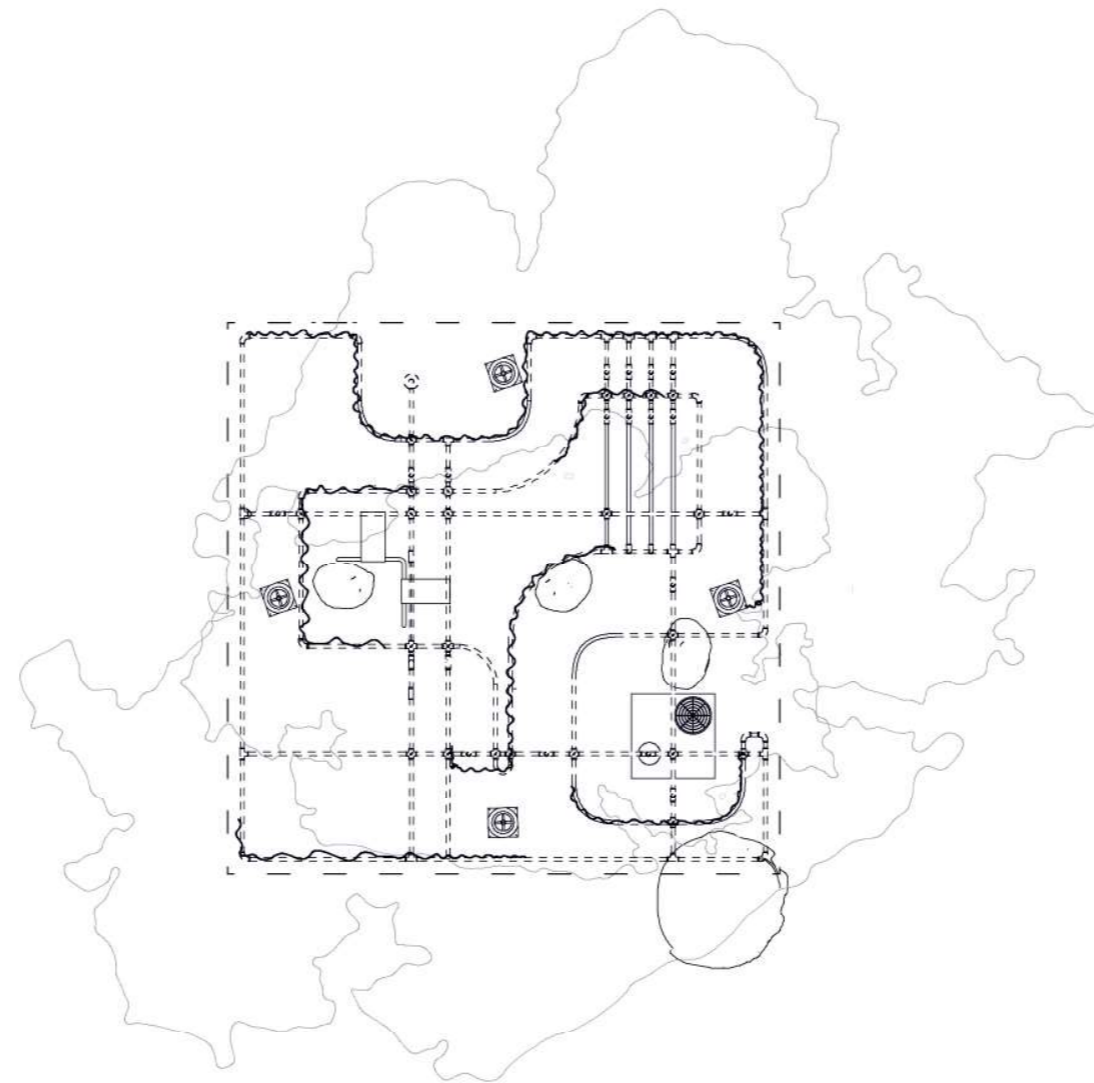
Patrick Seehuber. UNI Stuttgart student. Spring 2019
HOUSE. Model



Thomas Rohrer. UNI Stuttgart student. Spring 2019
interior ROOM. Drawing



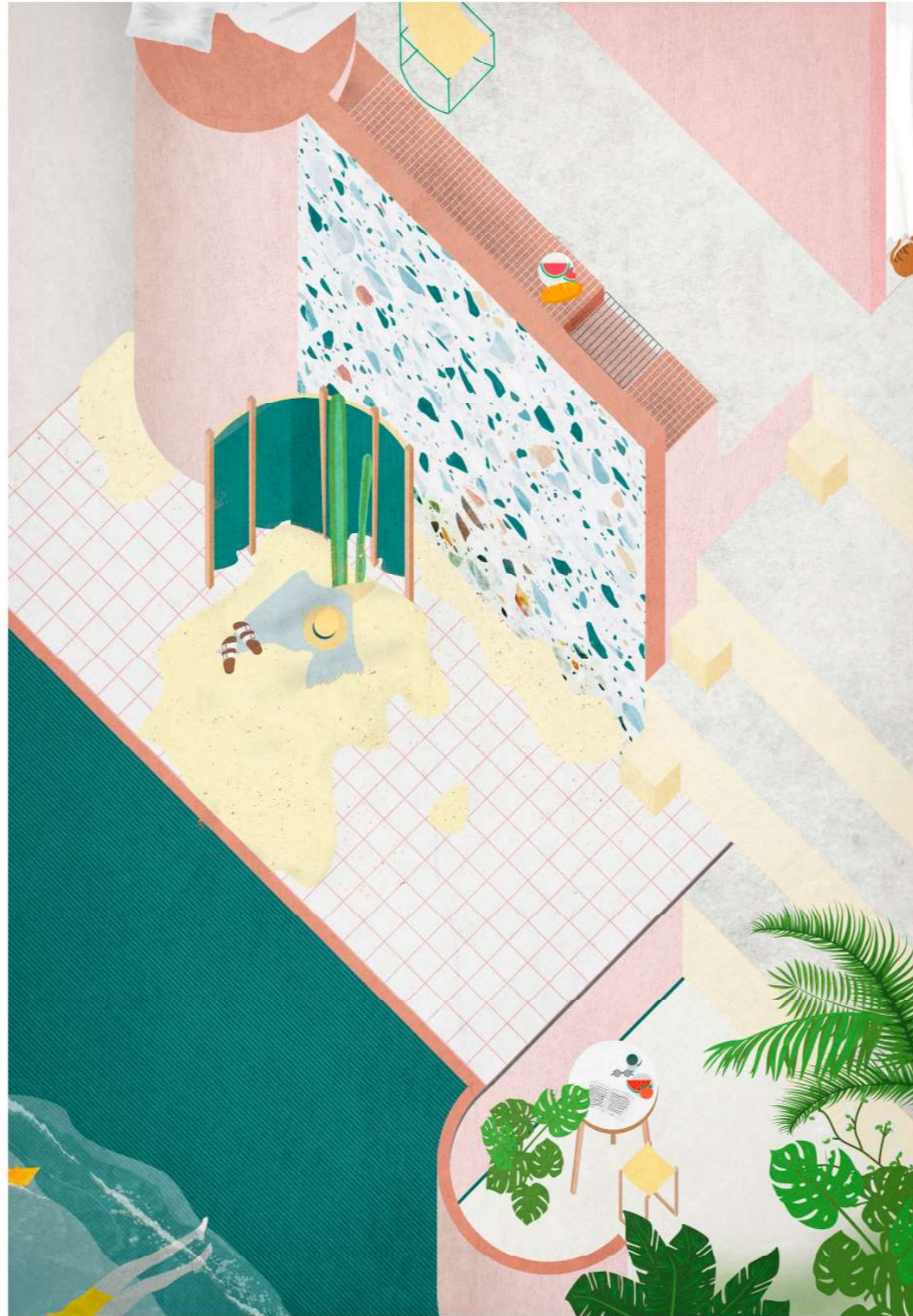
Thomas Rohrer. UNI Stuttgart student. Spring 2019
interior ROOM. Model



Sophia Landsherr. UNI Stuttgart student. Spring 2019
in-between ROOM. Drawing



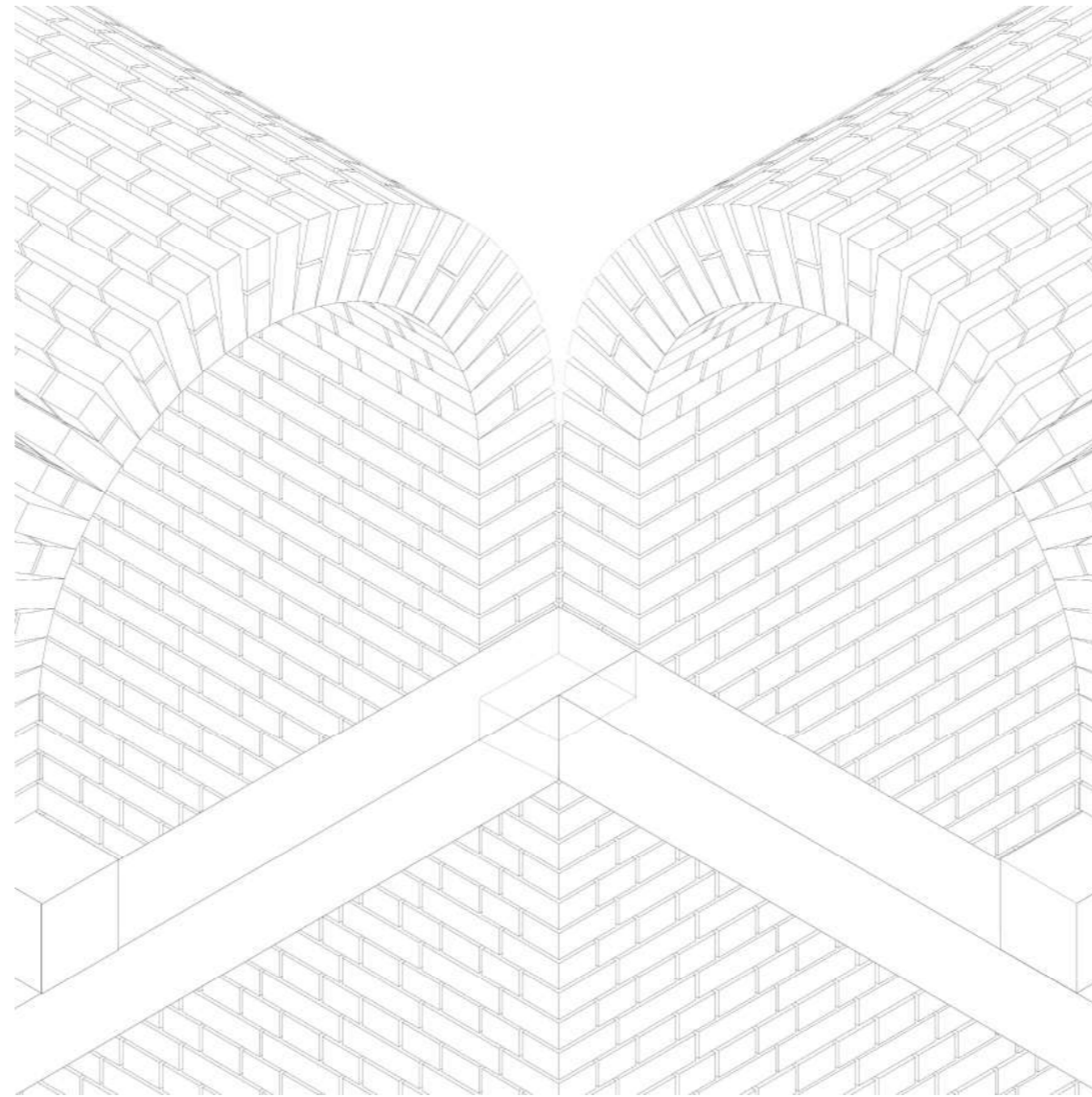
Sophia Landsherr. UNI Stuttgart student. Spring 2019
in-between ROOM. Model



Eva Hanewinckel. UNI Stuttgart student. Spring 2019
CORNER. Drawing



Eva Hanewinkel. UNI Stuttgart student. Spring 2019
CORNER. Model



Luca Buchholz. UNI Stuttgart student. Spring 2019
ELEMENT. Drawing



Luca Buchholz. UNI Stuttgart student. Spring 2019
ELEMENT. Model

WHEN?

07.oct.2019 presentation

16.oct.2019* introduction

23.oct.2019

28.oct.-01.nov. 2019 Mallorca study trip

6.nov.2019

13.nov.2019*

20.nov.2019

27.nov.2019* mid term

04.des.2019

11.des.2019*

18.des.2019

15.jan.2020*

22.jan. 2020

29.jan.2020 final presentation

* wednesday afternoon 15.00-19.00h
underline with the presence of TEd'A

Backcover: Paolo Monti. Procida, Napoli, 1968



TU Munich
TEd'A arquitectes | Irene Pérez and Jaume Mayol
Autumn 2019