



Mobility between Form and Flux, Space and Time

Towards a comprehensive approach

Prof. Dr. Hans-Peter Meier-Dallach
Culturprospectiv/World Drives
Association Zürich

Dr. Gunter Heinickel, M.Sc.
ScienceScapes Berlin

Space and Spatiality in Turmoil: NEAT and the Migration Crisis

An Epoch of new transversals and fences

Accessibility and Reachability are no longer a problem

Total virtualisation of geological Formations



Wikicommons © AFP



Wikicommons © copper.ch

Euro-Atlantic modernisation Paradigm in question

High Speed and total Permeability

Accessibility and Reachability are no longer a problem

Instead, specific Transformation Points are Indicators and Examples of new Crises of Mobility, of our perception of to related Time-Space qualities

These crises had been long ignored or considered as irrelevant by research



1

The Nature Landscape transforms into Parkland – What is the Future of the Nature Landscape? Project Kontrastraumpartnerschaften Berlin-Zürich
https://www.baselland.ch/fileadmin/baselland/files/docs/bud/arp/daten/modellvorhaben-aufwertung-bln-objekt_belchen-passwang_2014.pdf



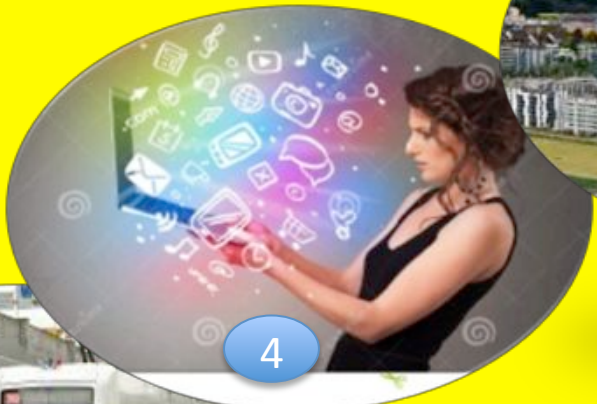
2

Transport Landscape of Highspeed
Vision Mobility Switzerland 2050
http://www.ivt.ethz.ch/oev/publications/papers/2015_VMS.pdf



3

Settlement Landscape: Neo Nomadism and Urban Mobility Cultures
Ifmo, Glattpark Barometer
culturprospectiv.ch



4

Communication Landscape: 24 hours

These Landscape examples illustrate a number of typical Transformation Points in our time. Such Transformation Points do manifest themselves consecutively or simultaneously in one specific mobility situation



5

Social/Societal Landscape:
Anonymity: Hochparterre – Sonderheft Glattpark

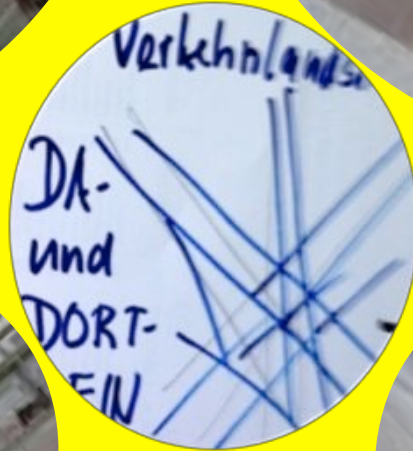
„Landscapes“ as a holistic observational notion: from observations to concepts



High-Speed

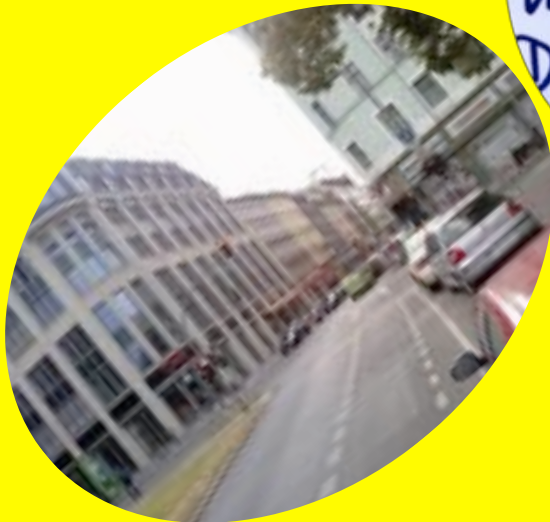


Low-Speed

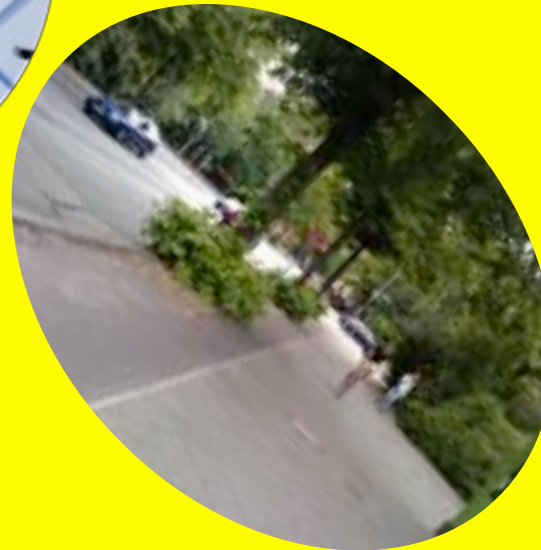


Being here and being there

After consecutive stages of modernisation, promotion and restrictions of mobility, new mobility technology strives between adaptation and new utopias



Commercial Provision



Traffic segregation by green buffer strips

illuminated



chaotic



Being here

Settlement
planning for
commuters and
multilocals
New Identity
strategies
between living and
working



silent



wild

original



transformed



nature with settlement

touristic sensation

Just Being

„Back to Nature“:
but what
Nature? Conflicts
between Event-
and Parkculture
and Ideals of
Wilderness

classic



dynamic



Being a Network

Expansion and
Turbulences

Ascetic reactions
and civilisational
aims: valorisation
of the senses

staged



virtual



**traditional
neighbourhood**

modern neighbourhood

**Being
together**

What is the sound
of the new
neighbourhoods?

The valorisation
of social contacts,
life styles and
ideas of the
cooperative city



flux oriented setting

Anonymous setting

Form (Gestalt) and Flux: to find common denominators for dazzling phenomena

F_G



illuminated

F_G



chaotic/ambiguous

Examples of various mixtures of form and flux factors, Berlin

G_F



silent

F_G



wild

wild

F

FLUX signifies the extreme sacrifice of the landscape to the pace, the speed, the route at the expense of its inherent time dimension

Extraversion



F g

Between these extremes there are many transitional stages, varying from setting to setting

G f

G

FORM (GESTALT) performs the full potential of a landscape, its space and time interactions

Introversion





Examples Marseille



The specific expression of space-time relations have to be considered in their specific spatial contexts: the respective aesthetic features do vary considerably from place to place

Passive experience

objective spatial
factors (distances,
surfaces, obstacles)

subjective spatial
factors (time
qualities / space-
time relations)

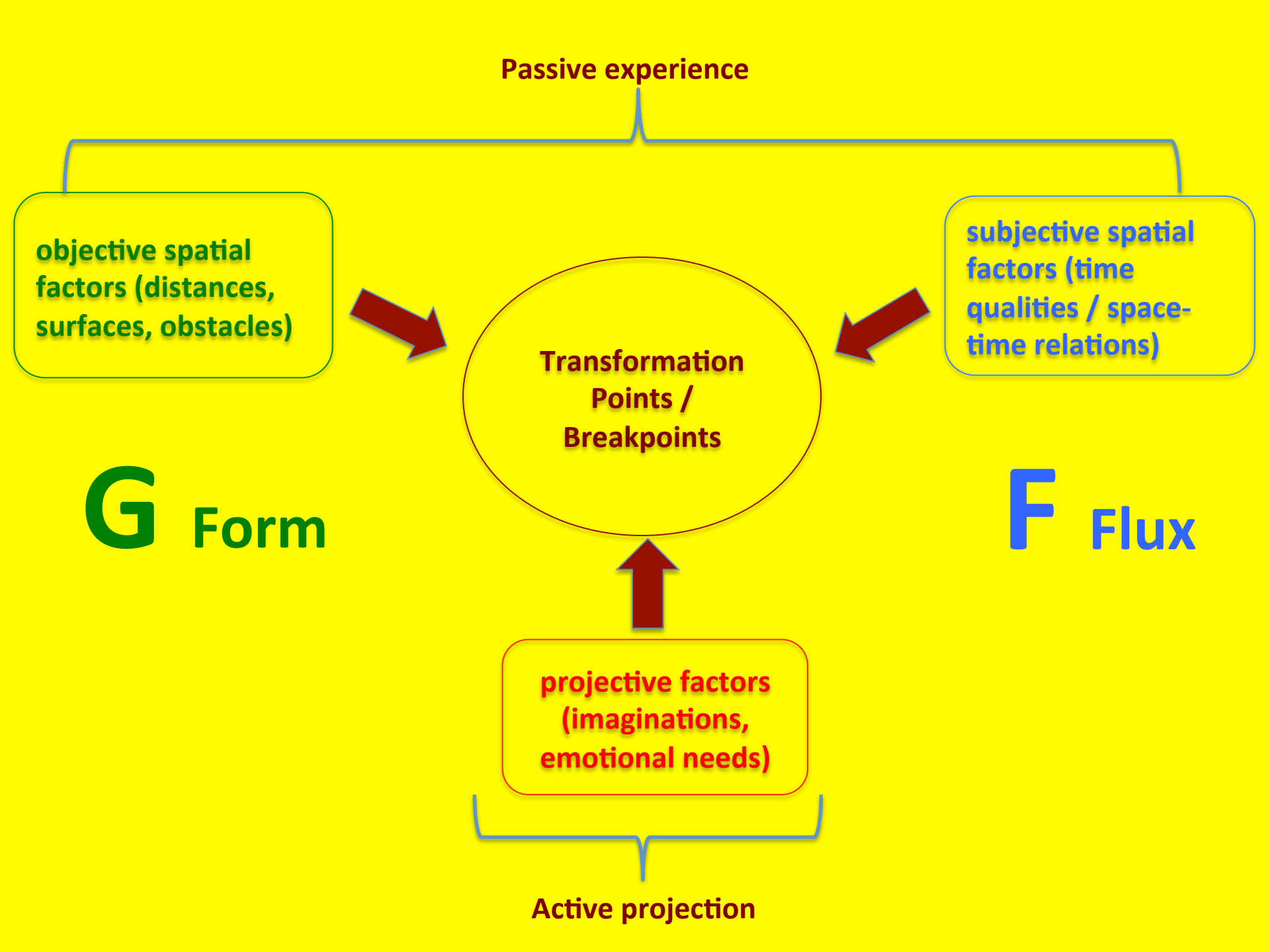
Transformation
Points /
Breakpoints

G Form

F Flux

projective factors
(imagination,
emotional needs)

Active projection



A historical Example for active Projections:
the tourist gaze in a tourist destination over time
perceives
and values
the same
landscape
differently



As documented in:

H. L. Dienel, C. Schröder, H. P. Meier-Dallach, Die neue Nähe. Raumpartnerschaften verbinden Kontrasträume, Steiner Verlag, Stuttgart 2003

Volatile elements of forms and flux

Exploring tubes analysing a given setting of landscape layers for form and flux elements

Social landscape

Communication landscape

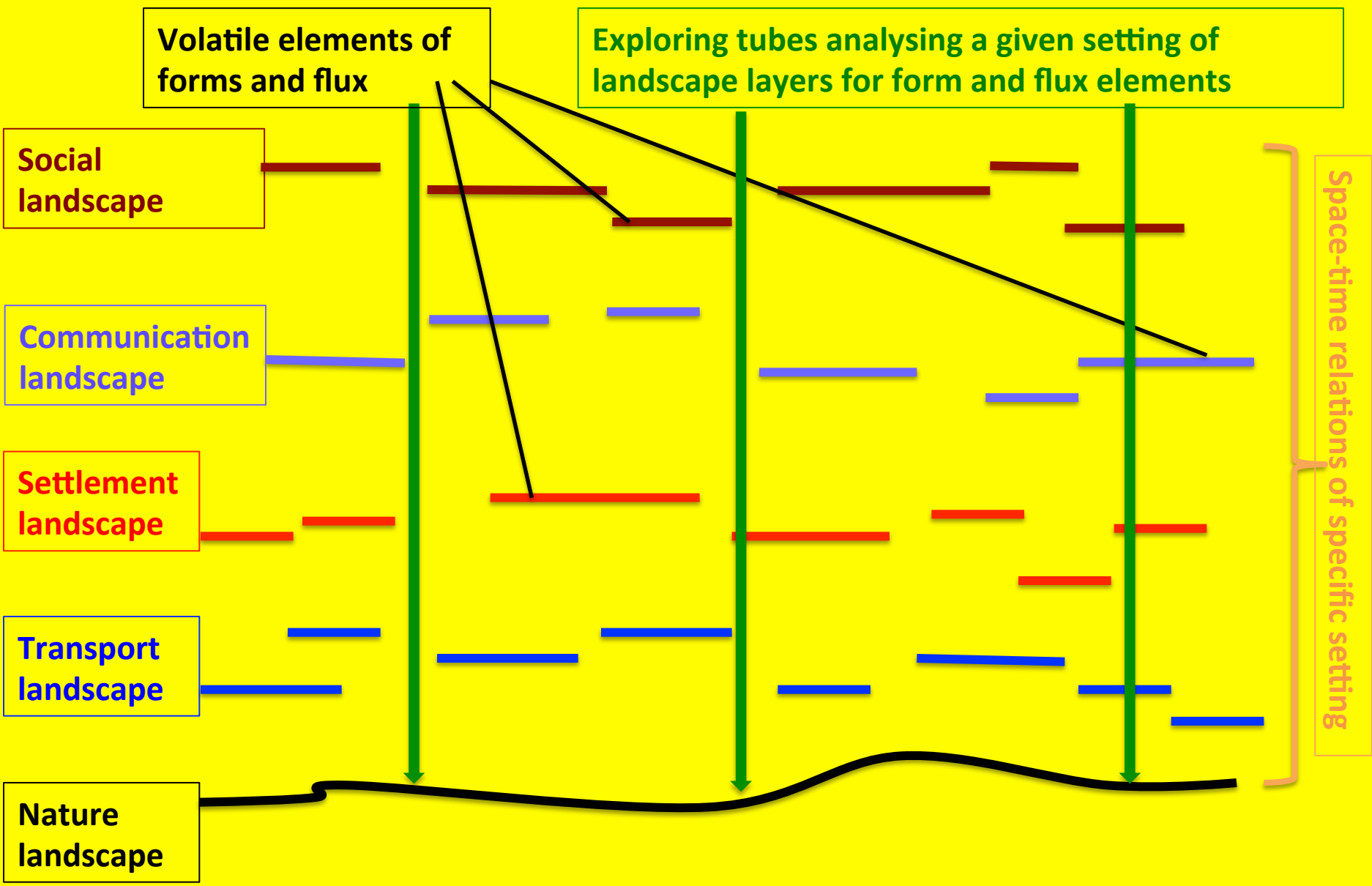
Settlement landscape

Transport landscape

Nature landscape

Space-time relations of specific setting

Tectonic-like model of the five landscape layers



Outlook onto the conference

Questioning mobility phenomena for Transformation Points on the various landscape layers



1

The Nature Landscape transforms into Parkland



2

Transport Landscape of Highspeed - **Example Session 1: From weak signals to mobility scenarios: France in 2050**



3

Settlement Landscape to Neo Nomadism – **Example Session 2: Future housing, working, and mobility perspectives in Munich Metropolitan Region**



4

Communication Landscape: 24 hours – **Example Session 4 b: Streets – challenges and opportunities of public space**
Session 6: Shaping Mobility Cultures



5

Social/Societal Landscape: Anonymity

Thank you!