



# Using Future Search participatory technique in developing Polycentric Urban Mobility Plans

## Experience of six European regions

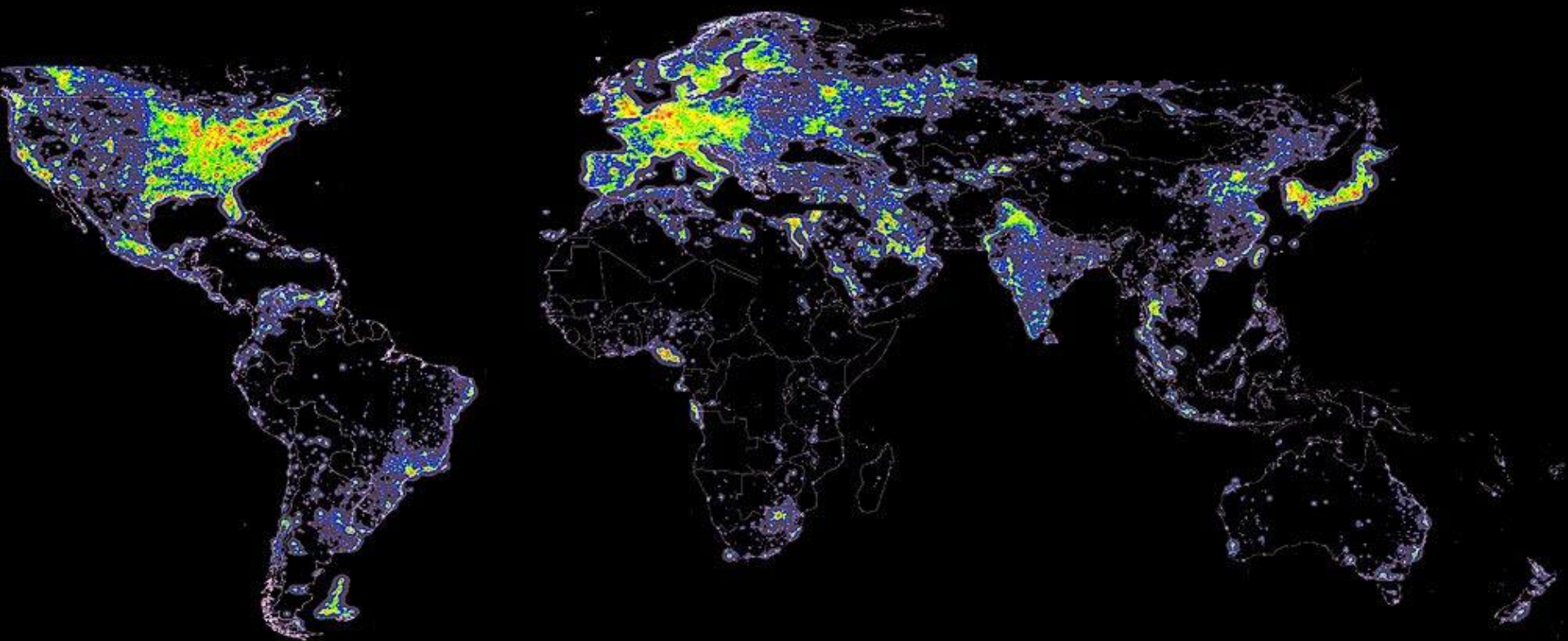
Caroline Ljungberg, Trivector, Sweden

mobil.TUM 2014

[www.poly-sump.eu](http://www.poly-sump.eu)



This project is funded by the Intelligent Energy – Europe programme.



"The region is the new city"



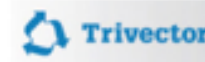






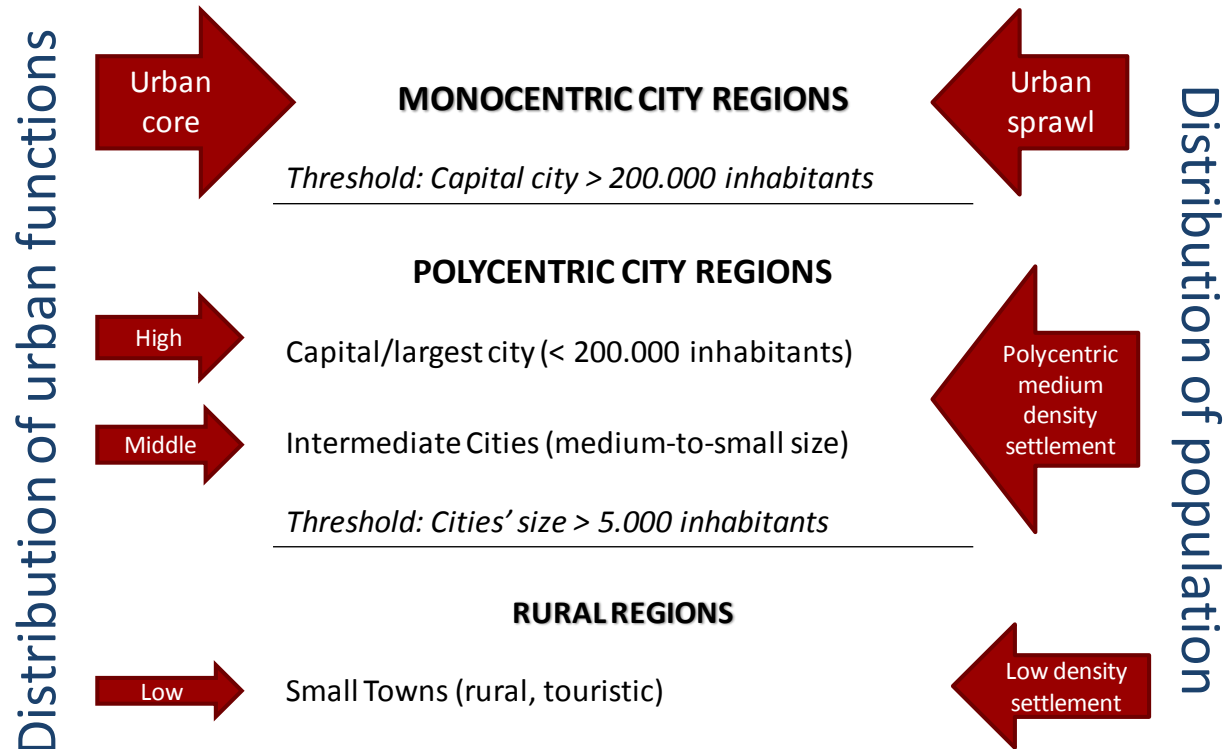
## The Poly-SUMP project

- Aim: To develop a new planning methodology focusing on needs of polycentric regions to develop Polycentric Sustainable Urban Mobility Plans
  - 11 partners from Europe (IT, AT, GR, FR, NL, PT, SE, SI)
  - Regional authorities, experienced consultants and research institutes
  - 6 partner regions using the methodology



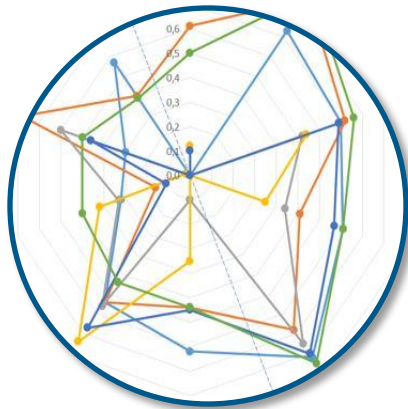


## Polycentric region – what is that?



# THE POLY-SUMP METHODOLOGY

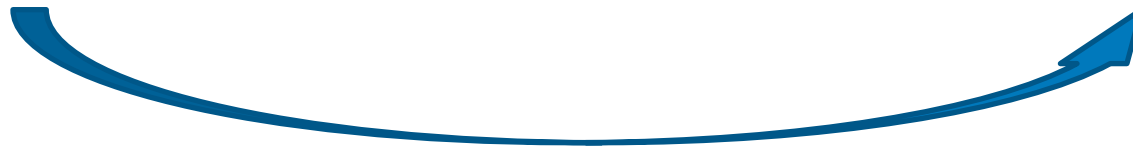
Understanding your region



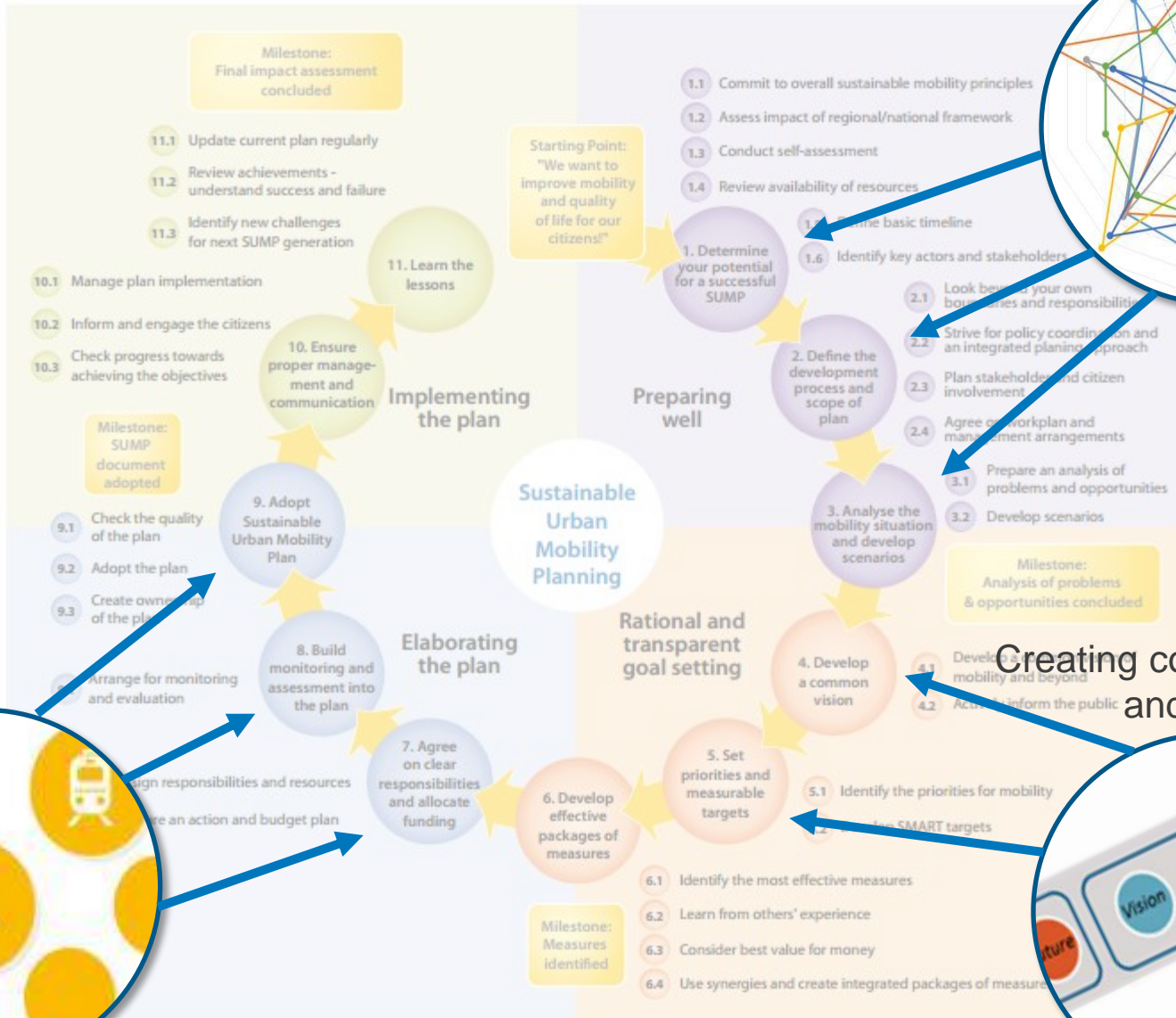
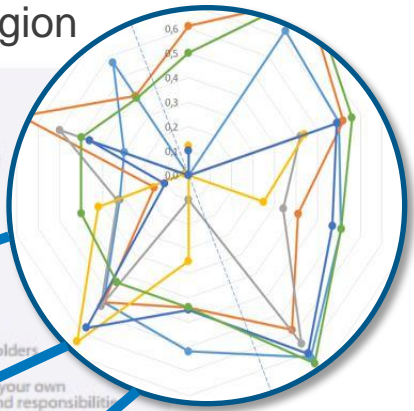
Creating common ground and vision



Poly-SUMP



# Understanding your region



Poly-SUMP

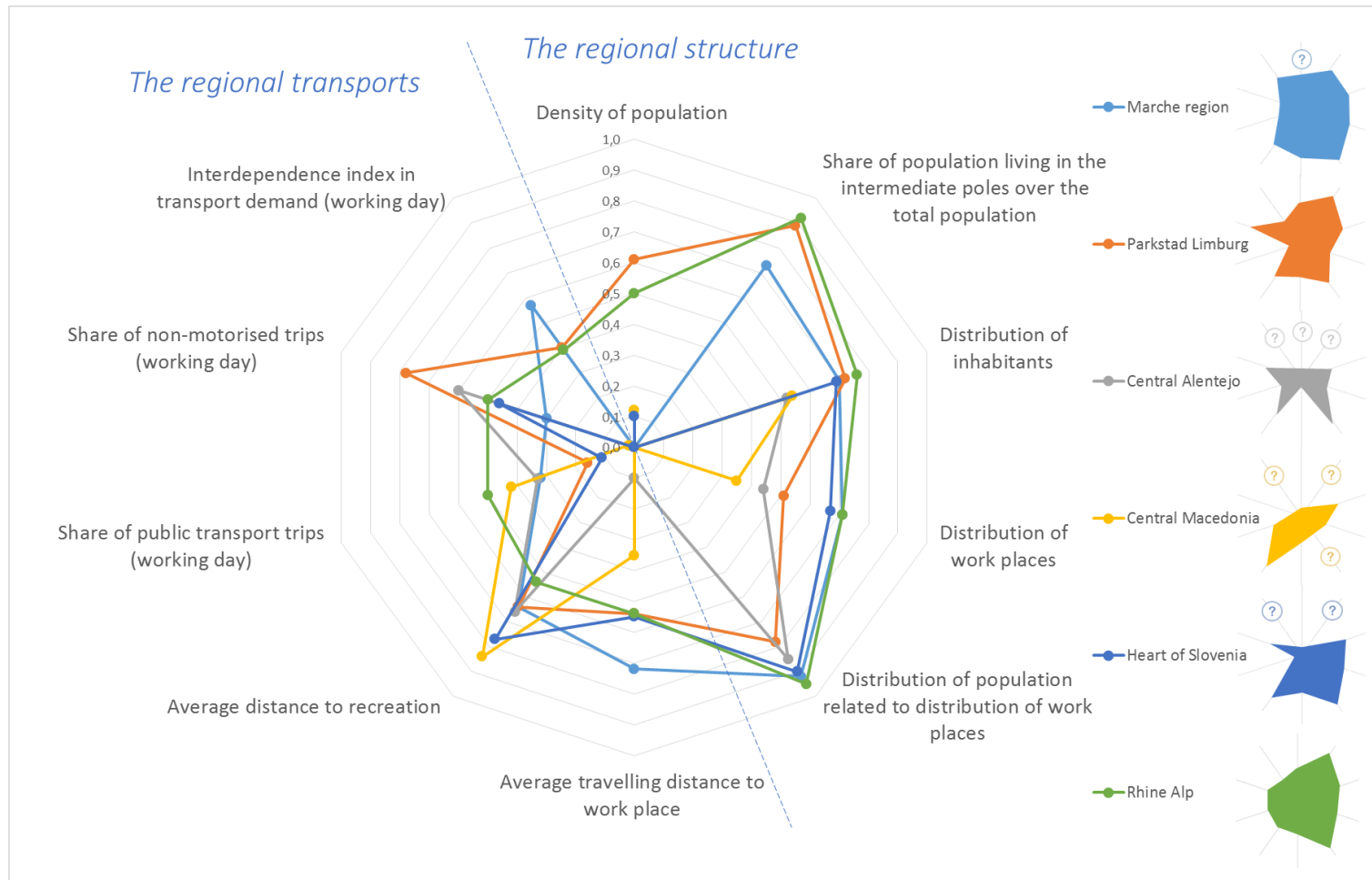
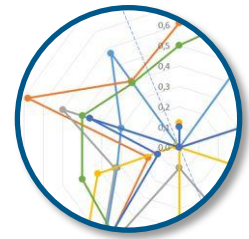


Creating common ground and vision

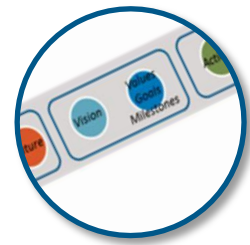




# UNDERSTANDING YOUR REGION - REGIONAL PROFILE



# CREATING COMMON GROUND AND VISION USING FUTURE SEARCH WORKSHOP

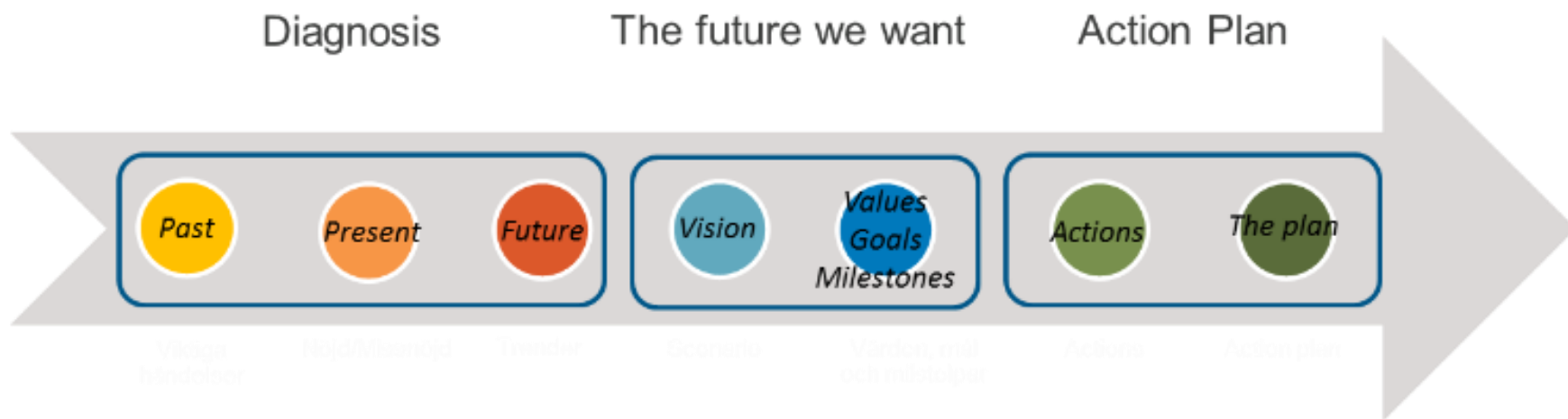


- ▶ Well known method from research on collaboration
- ▶ A condensed process
- ▶ Getting "the whole system in the room" – 60-80 people
- ▶ Lots of different stakeholder groups: experts, decision makers etc
- ▶ 17 hours with the same group in 3 days





# FUTURE SEARCH WORKSHOP

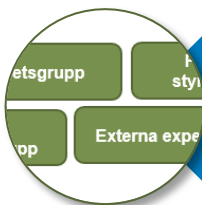




# FUTURE SEARCH WORKS!



Shorten the planning process



Increases understanding between stakeholders



Consistent with research and experience



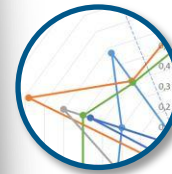
Replaces meetings effectively





## Table of content

Introduction .....	2
Scope of the PolySUMP.....	3
The region .....	4
Description of the region .....	4
Context for the PolySUMP .....	6
Visions and challenges.....	6
Political and administrative frameworks in the region .....	7
Etc. ....	9
Travel and Transport in the region today .....	10
Vision and objectives .....	13
Actions for delivering our objectives .....	14
Action 1.....	14
Action 2.....	15
Action 3.....	16
Ect .....	17
Implementing and monitoring the actions.....	18
Conclusions .....	19



Understanding the region



Creating common ground and vision

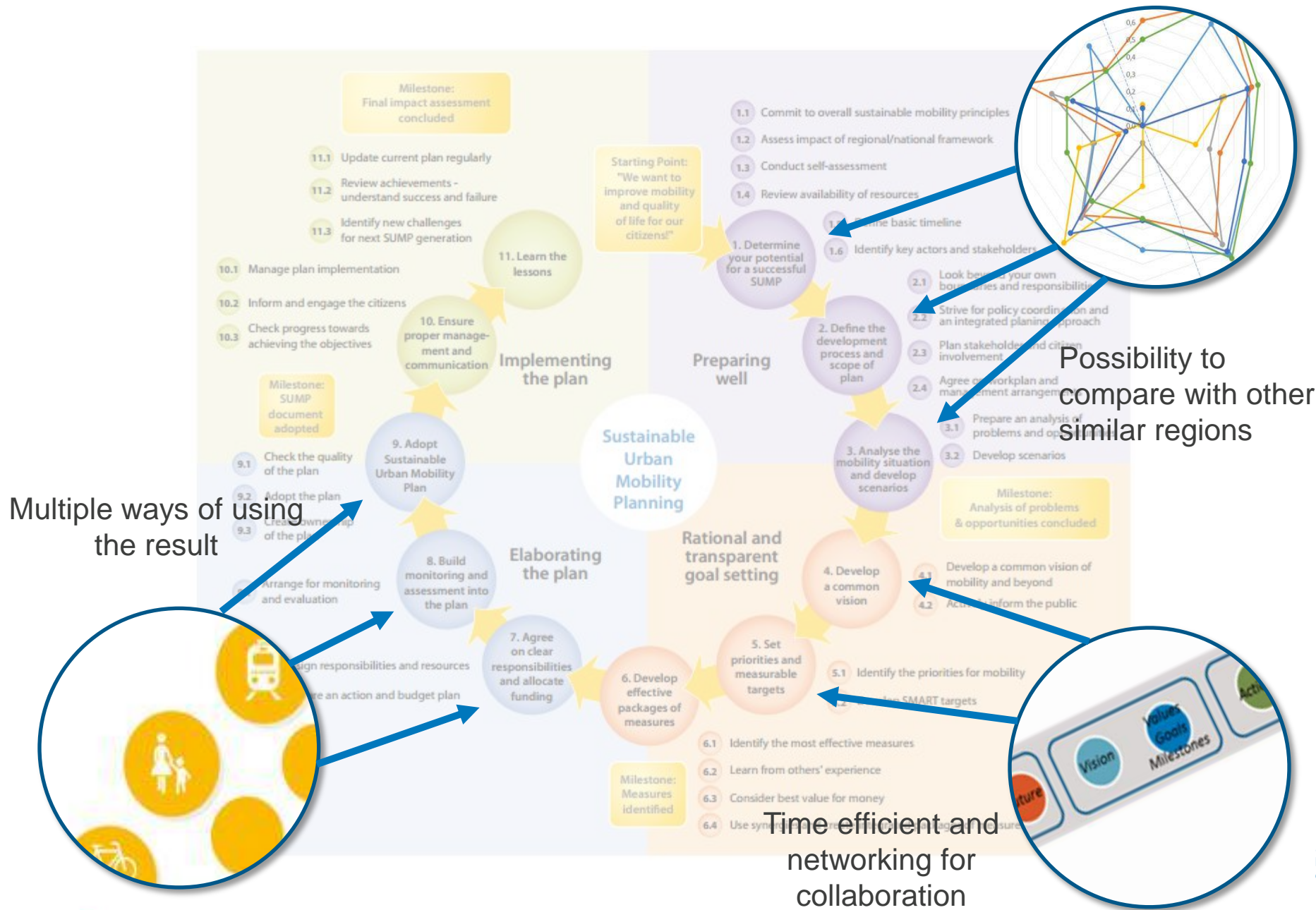




## OTHER WAYS TO USE THE RESULT

- ▶ Make a Poly-SUMP
- ▶ Complementing existing regional transport plan
- ▶ Highlighting parts of existing plans
- ▶ Initiative to start a process
- ▶ Pressure on mobility issues
- ▶ Benchmarking and exchanging knowledge
- ▶ Using the network





Multiple ways of using the result

Possibility to compare with other similar regions

Time efficient and networking for collaboration

# POSSIBILITIES AND DIFFICULTIES COMPARED TO A CONVENTIONAL WAY OF MAKING A SUMP

- ▶ Better regional understanding of local needs
- ▶ Networking
- ▶ Fostering creativity
- ▶ Efficient
- ▶ Backcasting and goal oriented
- ▶ Bottom-up approach
- ▶ Legitimacy of actors
- ▶ Many people for a long time
- ▶ Right stakeholder mix
- ▶ Financing of the actions





# THE POLY-SUMP METHODOLOGY

Understanding your region



Creating common ground and vision



Poly-SUMP





## What happens in the project?

- Tomorrow – 3 days of transferability workshop:  
Can this methodology be used in other regions?
- Project ends this year





**Thank you!**

Caroline Ljungberg, Trivector, Sweden  
[caroline.ljungberg@trivector.se](mailto:caroline.ljungberg@trivector.se)

mobil.TUM 2014

[www.poly-sump.eu](http://www.poly-sump.eu)



This project is funded by the  
Intelligent Energy – Europe  
programme.