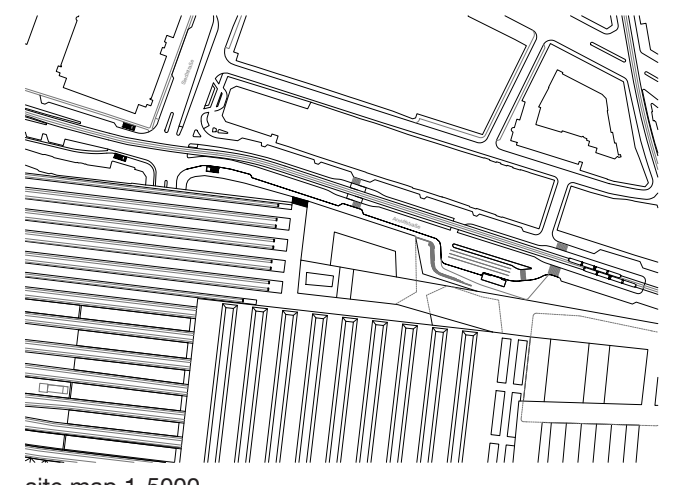


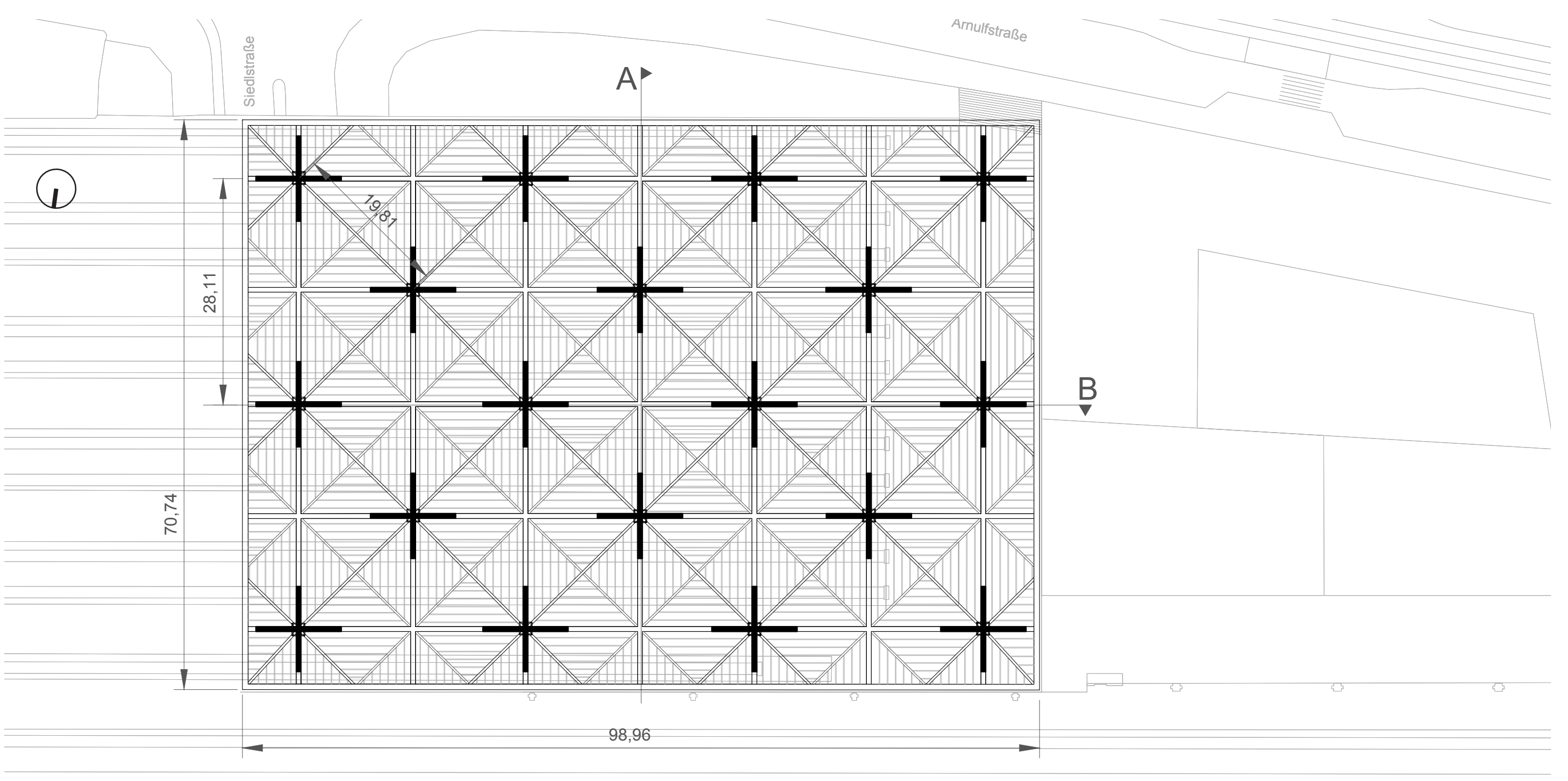
View from Arnulfstraße

group 3  
Under the Canopy

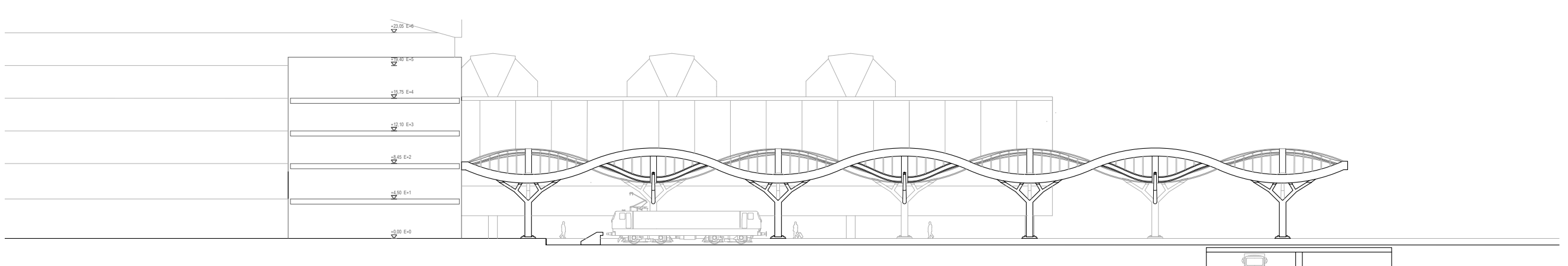
Hébert, Fannie  
Le, Elsa Diem Thao  
Robin, Bastien



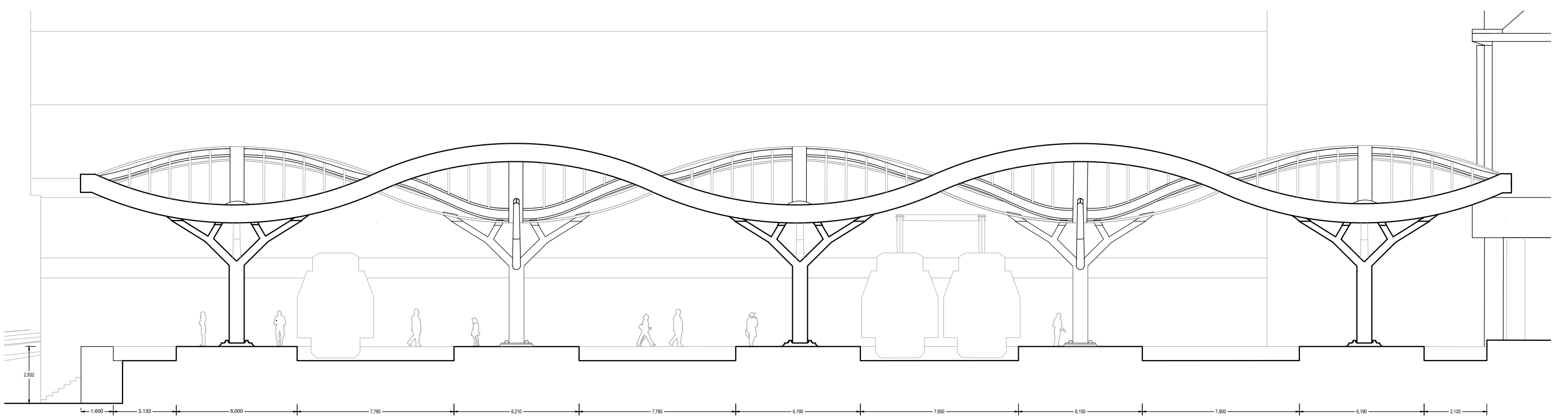
site map 1-5000



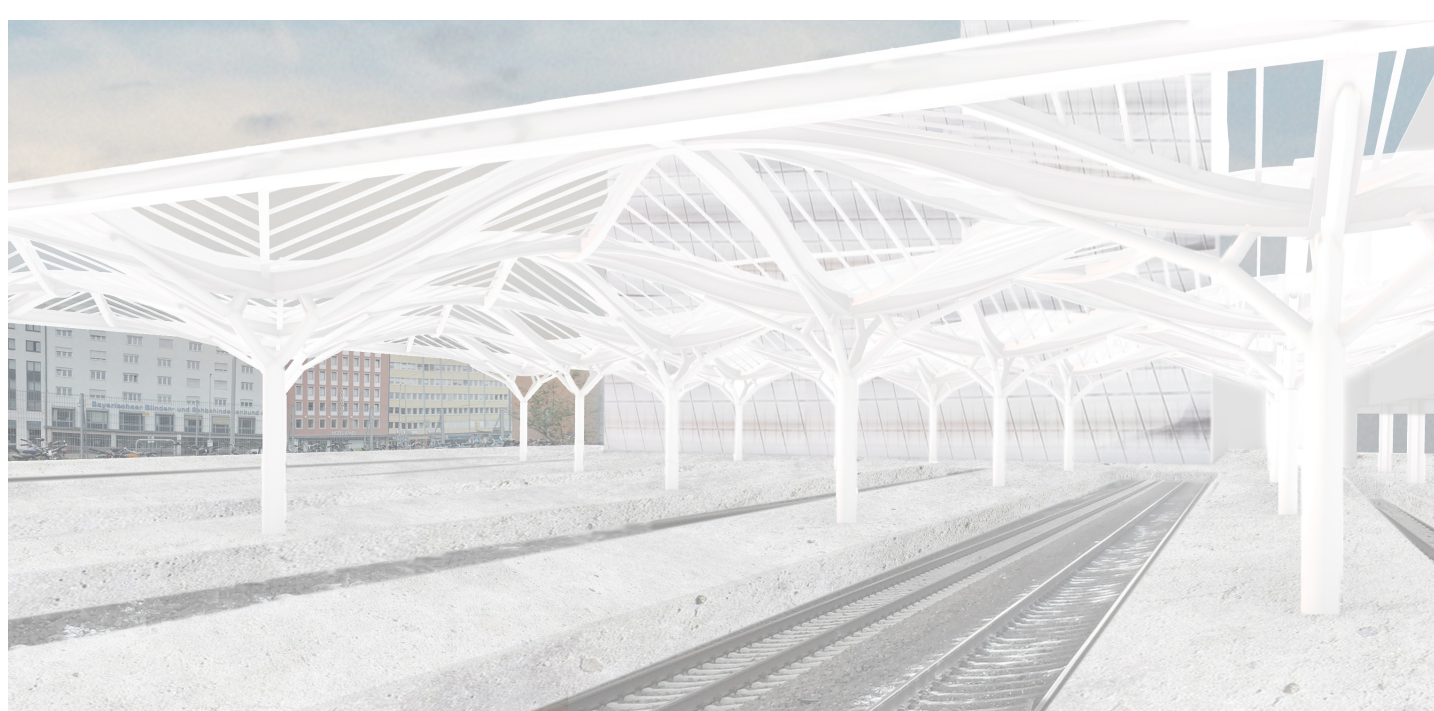
Ground plan 1-500



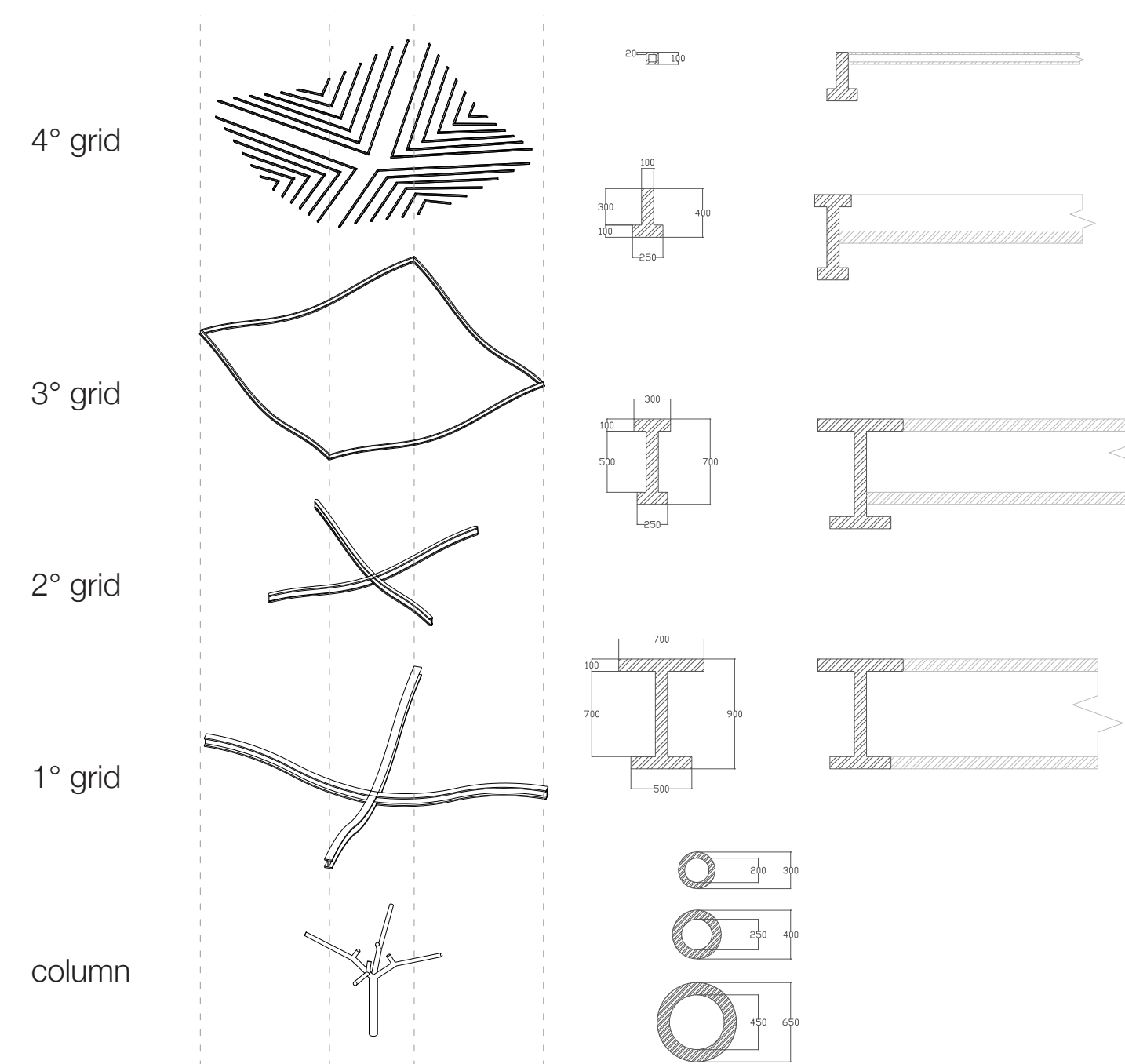
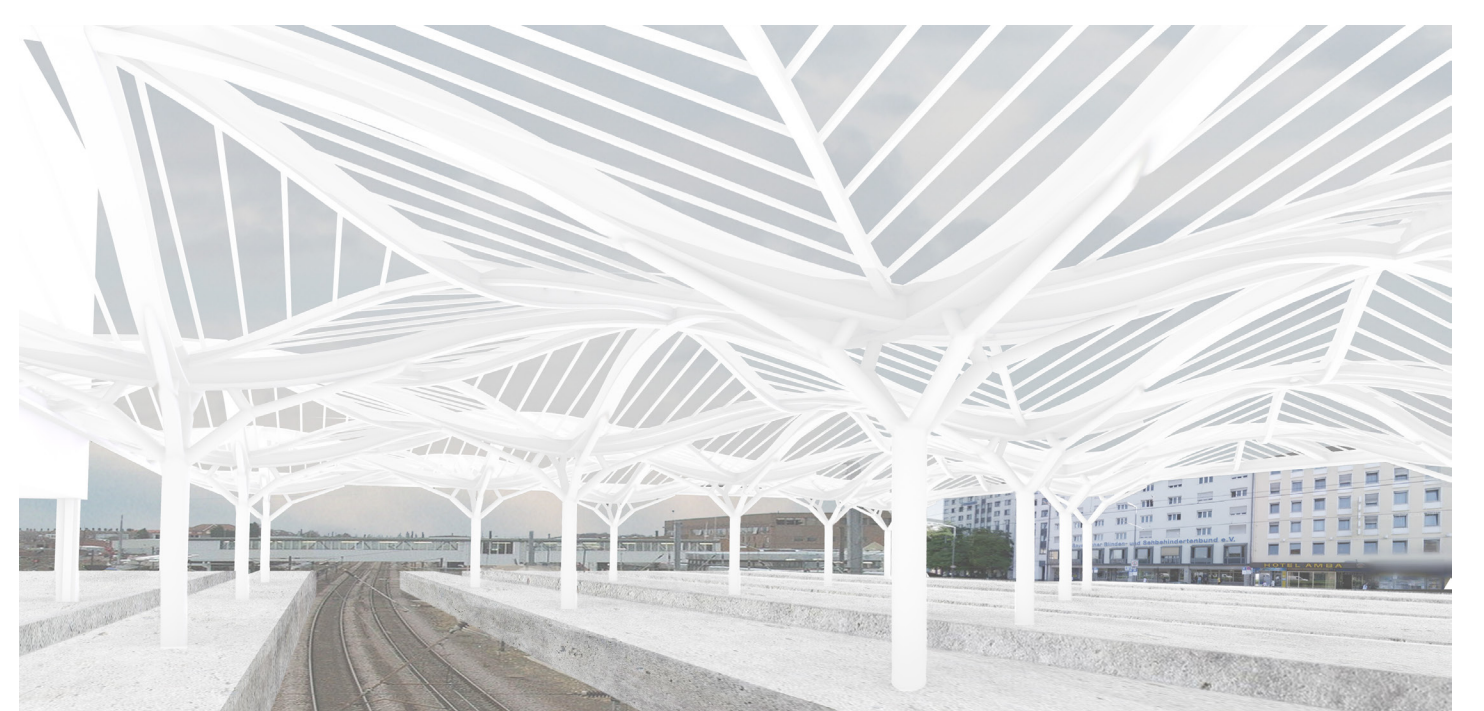
Section B-B 1-500



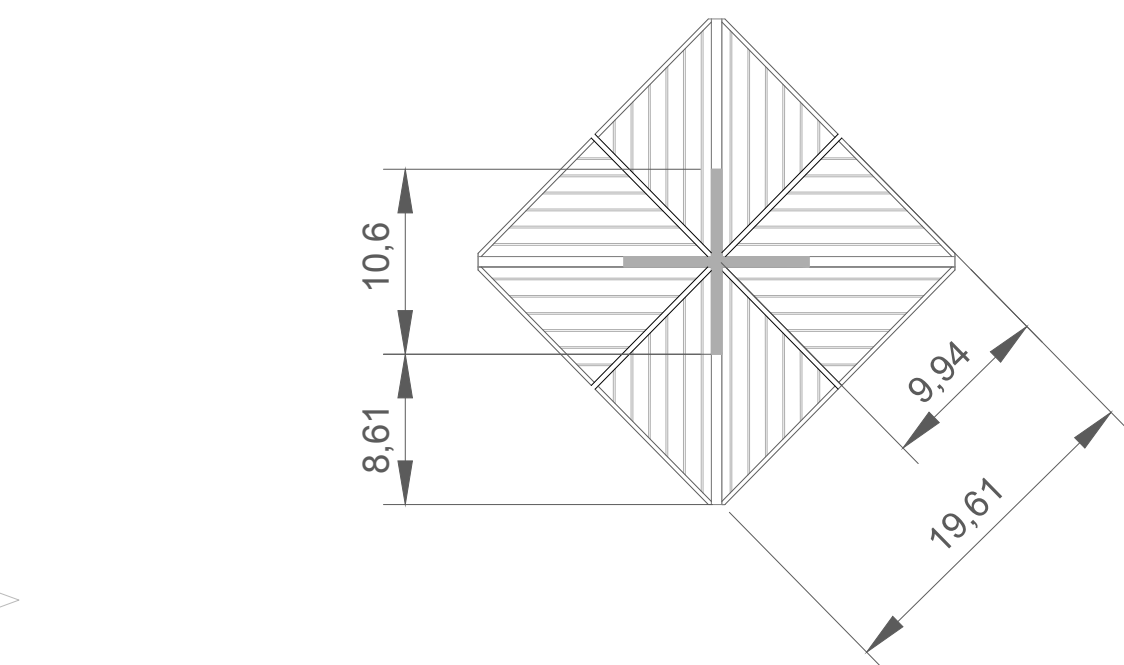
Section A-A 1-200



Inner views

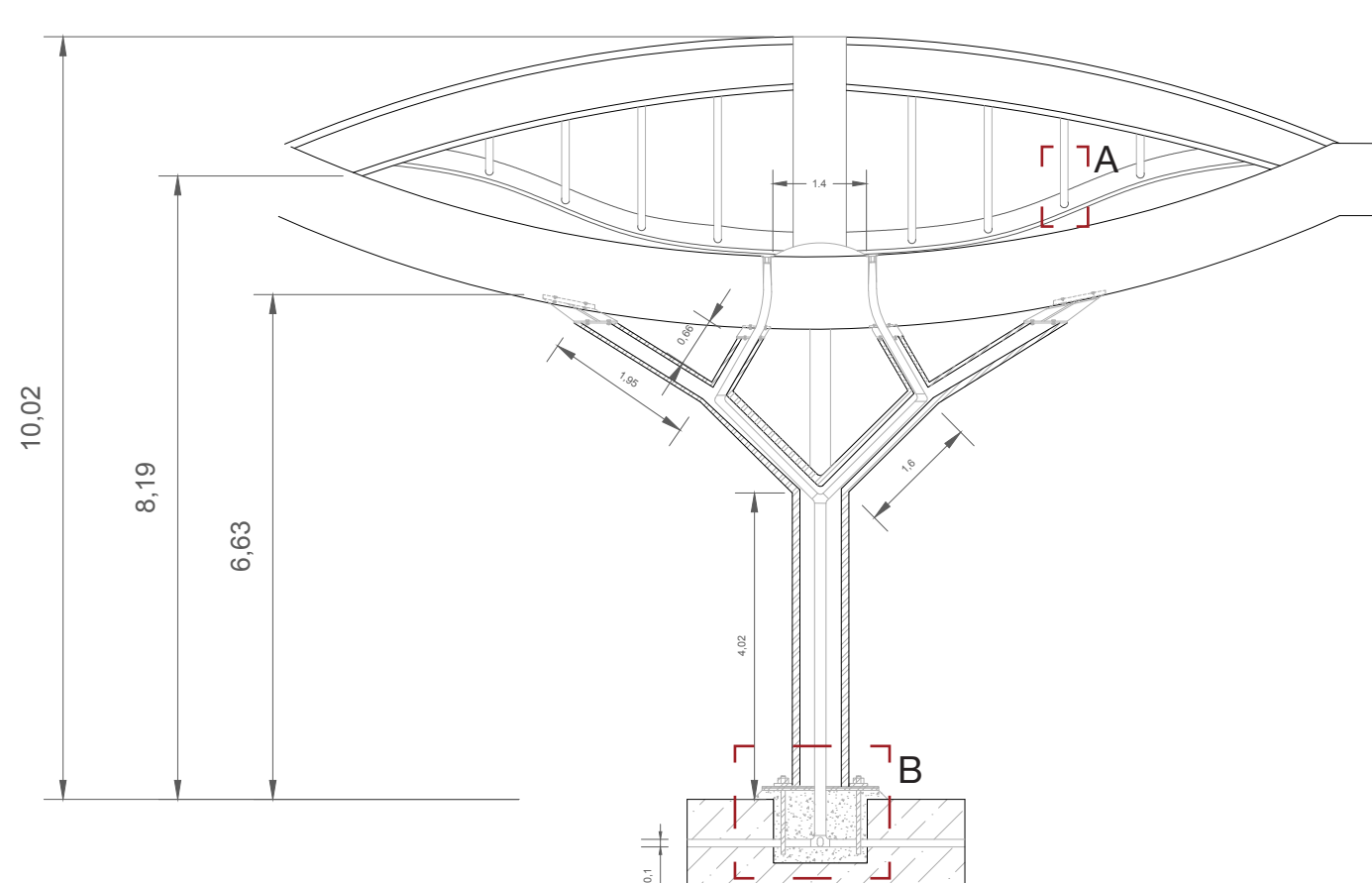


Four structural systems and the corresponding beam' profiles

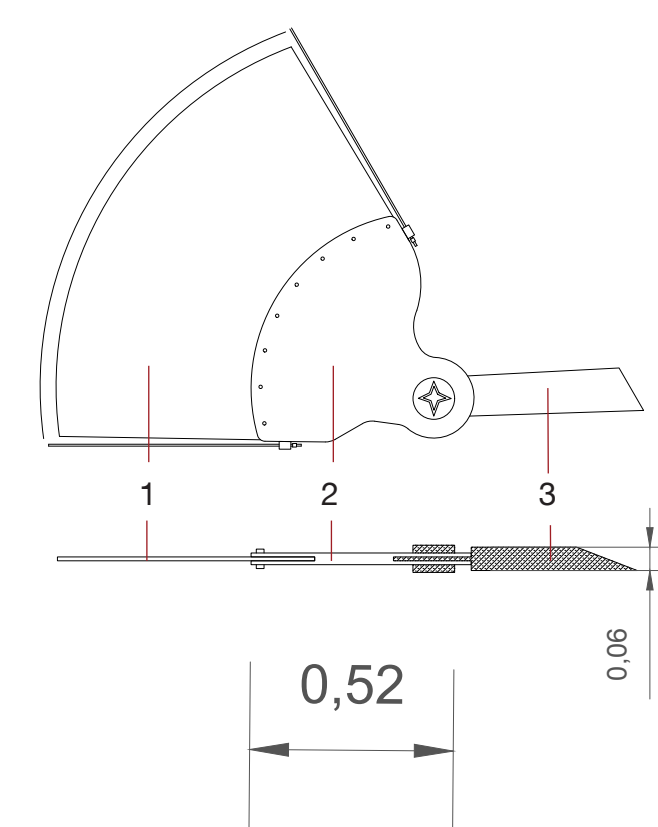


Our concept is a tree canopy-like structure, as in woodlands. The steel and membrane structure allows natural light and ventilation to cross the space underneath. The 28 meters span between the columns give space for the users' circulation.

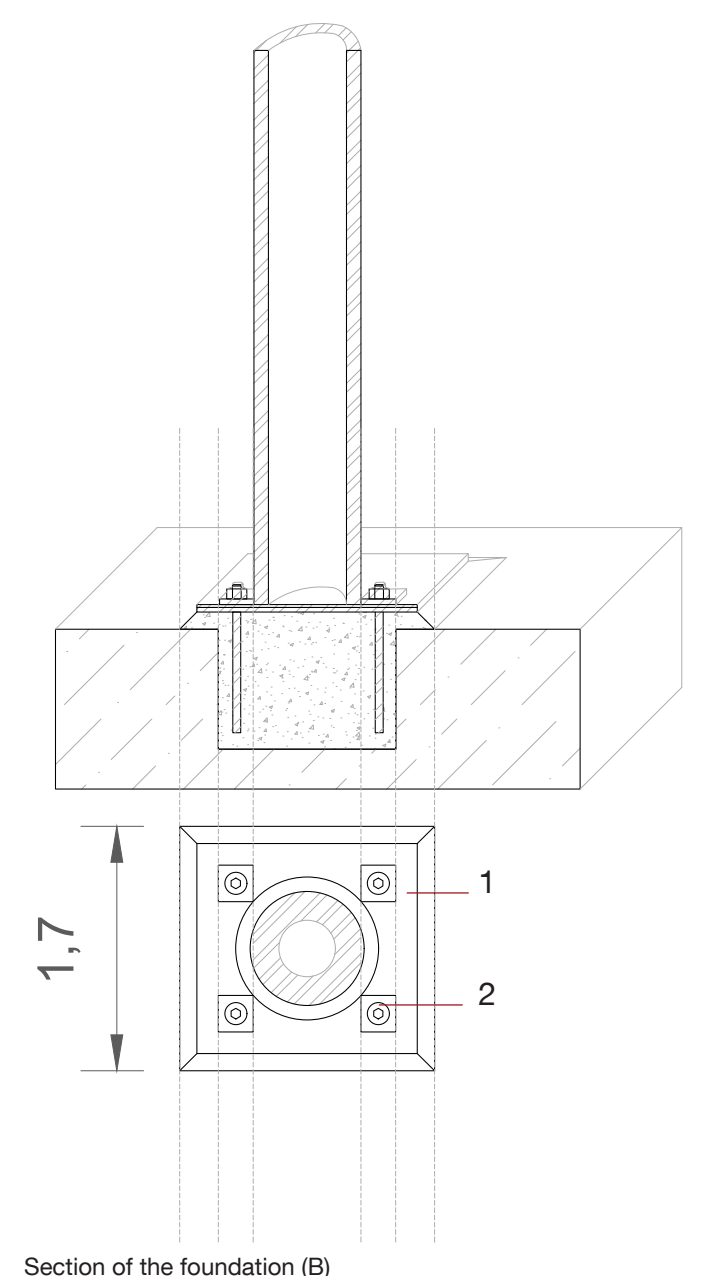
The roof is composed of four layers of structures. The primary grid supports all the other three. Each of them have different profiles and sizes according to the charge and span they need to hold.



Section of a column with drainage system



Detail of the membrane's clip (A)



Section of the foundation (B)

The tree column supports the weight of the roof and its branches help to brace the structure. In each column, a drainage system allows the evacuation of rainwater through it. As for the foundation, the column is simply held by bolted a steel plate in the concrete floor (B).

A. Clip

- 1- Textile membrane
- 2- Steel clipping plate
- 3- Cable

B. Foundation

- 1- Steel base plate
- 2- Steel anchors